

Shiva Products

ISO 13485: 2016 (TUV SUD Certified)

PRODUCT CATALOG

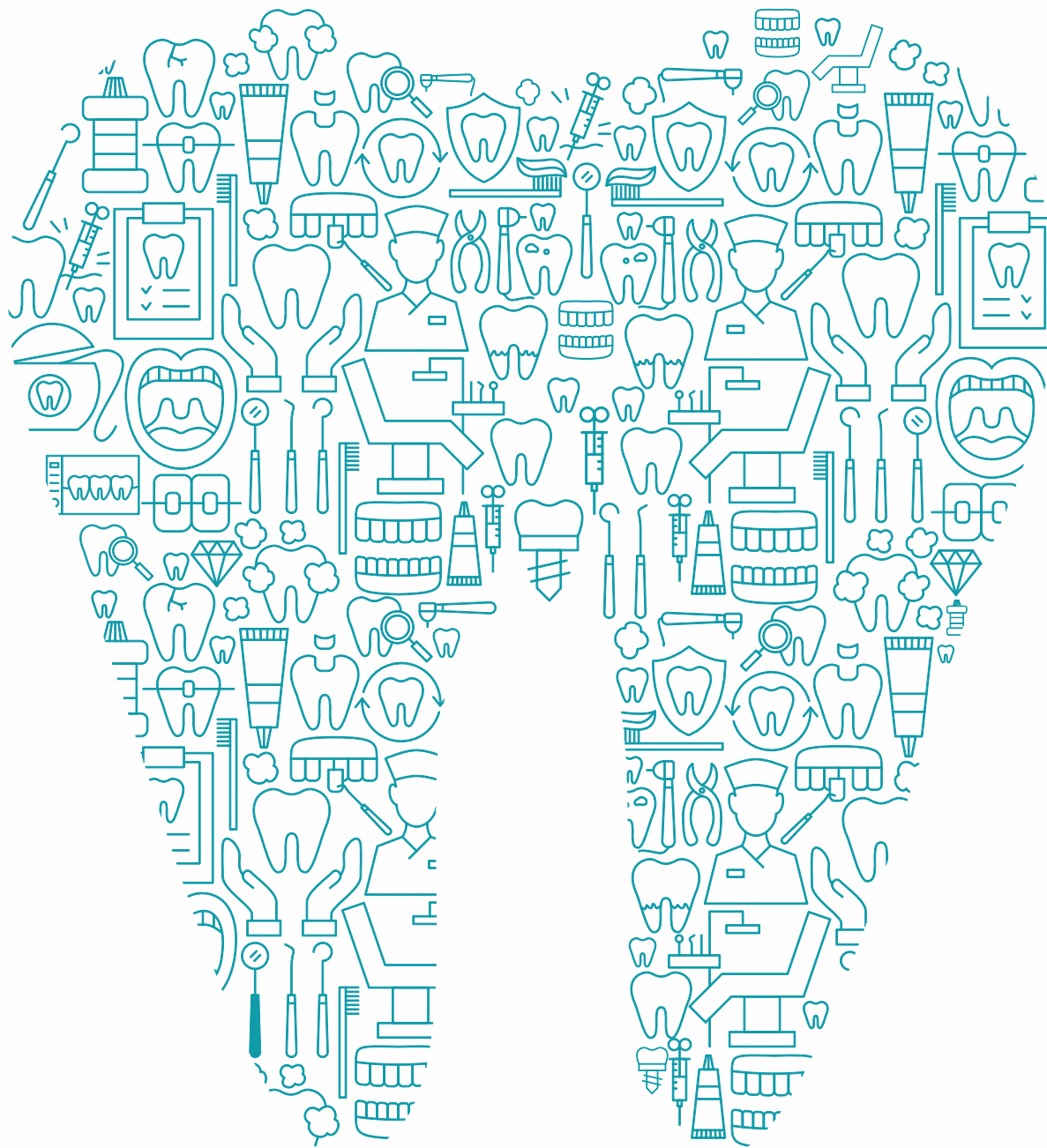


Proudly
Exporting to

40⁺

Countries
Worldwide

Experience The Refinement



INDEX

Endo. & Conservative Range

D-Sens G + Gel/ Liquid	12
D-Sens P	13
Rootfyx	14
MTA	15
Ceraseal-B	16
Blitz White	16
Sealmax +	17
Sealmax-R	18
D-Vitz	19
F-Sol	19
Endo Paste	20
Endogel-RC & Endo-L	20
Twin Kleen	21
Sodium Hypochlorite	22
Chloro-HX (2%)	22
Mercury	22
Calx, Calx-O	23
Calcium Hydroxide Powder	23
Calahyd-RC	24
Calahyd +	24
T-Fill	25
Gsol	26
ETC-37	26
Ziego	27

Prosthodontic Range

Bite Registration Wax	30
Classic BRW	30
Perfect Bite	30
Bite Wafers	30
Bite Rims	30
Bite Blocks	30

Soft-Liner (Tissue Conditioner)	31
HF-Gel	31
Articulating Paper	32
Hemostaz Gel/Solution	33
Mock-Up Wax	33
Modelling Wax (Base Plate Wax)	34
Shellac Base Plates	35
Dental Special Tray	35
Impression Compound Sticks (Green Tracing Sticks)	36
Impression Compound	36
Inlay Sticks	37
Sticky Wax Sticks	37
Spacer Wax	37
Cold Cure Acrylic Resin	38
Special Tray Material	38
Heat Cure Acrylic Resin	39
Boxing Wax	40
Beading Wax	40
Cold Mould Seal	41
Die Stone (Type IV)	41
Reinforcement Mesh	42
Palate Wax	42
Casting Wax Sheets	43
Eazy Tray	43
Retention Mesh	44
Clasp Profiles	44
Grids Wax	44
Lingual Bar	45
Utility Wax	45

INDEX

Orthodontic Range

Denture Base Acrylic Resin Liquid	47
Orthocal Stone	47
Relief Wax	47

Preventive Range

Zirprophy	50
Pro-Paste	50
Pumice Powder	50
Find Fast	51
Plaque-D	51

Waxes

Inlay/Onlay Pattern Wax	53
Cad-Cam Wax Blanks	54
Sprue/Wire Wax	54
Carving Wax/Wax Blocks	55
Carding Wax/Teeth Wax	55

Alloys

Ni-Cr Alloy	58
R2 Ceramic Alloy	59

Stones

Dental Stone (Type III)	61
Plaster of Paris (Type II)	61

Miscellaneous Products

Angular Alcohol Lamp	64
Glass Beads	64
Arch Bar	64
Lubri Spray	65
Mixing Pad	65
Die Hardener	66
Die Separator/Die Lubricant	66
Die Spacer	67
Die Thinner	67

ACCREDITATIONS



Certificate

Breakthrough Management Quality Registrar (BMQR)

Certifies that the Good Manufacturing Practices of

SHIVA PRODUCTS
 H.O: 214, Bluebell Industrial Estate, Chinchpada, Vasai-East,
 District: Palghar, 401208, Maharashtra, India.
 Manufacturing Unit: B-18, Dwarka Industrial Estate, Naik Pada, Waliv,
 Vasai-East, District: Palghar, 401208, Maharashtra, India.

has been assessed and found to be in accordance with the requirements of the quality standards

ISO 22716:2007

GOOD MANUFACTURING PRACTICES FOR COSMETIC PRODUCTS

for the following scope of certification

**Manufacturing & Supply of Cosmetics Products used in
dentistry**

*Further clarifications regarding the scope of this certificate and applicability of GMP requirements may
be obtained by consulting the organization.*

Original Certification Date	: 15/05/2021	Surveillance Audit	
Current Certification Date	: 15/05/2021	Use On	Use On
First Surveillance Due on	: 14/05/2022	Re-issuance	Re-issuance
Second Surveillance Due on	: 14/05/2023		
Certificate Expiration Date	: 14/05/2024		





Certificate No: AB221S214361

For BMQR
 No.5, 2nd Floor, Sathyamoorthy Road, Thiruvalluvar Nagar, Thirumangalam,
 Anna Nagar West, Chennai - 600 040, Tamilnadu, India.
 email: iso@gmqr.com, Web: www.bmqr.com
 Ph: 044-26152136

The certificate will remain current subject to the company maintaining its system to the required standards. This will be monitored regularly by BMQR Certifications Pvt. Ltd.
 This Certification details and effectiveness are listed at www.bmqr.com. Registration does not assure the quality of products produced by a Quality System.
 This Certificate is granted based on the latest sampling audit as per ISO 22716:2007 and BMQR is not responsible for client's failure to maintain documented quality system.
 This certificate is the property of BMQR Certifications Pvt. Ltd. and to be retained upon request.



Certificate

Breakthrough Management Quality Registrar (BMQR)

Certifies that the Good Manufacturing Practices of

SHIVA PRODUCTS
 H.O: 214, Bluebell Industrial Estate, Chinchpada, Vasai-East,
 District: Palghar - 401 208, Maharashtra, India.
 Manufacturing Unit: B-18, Dwarka Industrial Estate, Naik Pada,
 Waliv, Vasai-East, District: Palghar - 401 208, Maharashtra, India.

has been assessed and found to be in accordance with the requirements of the quality standards

WHO-GMP

for the following scope of certification

Manufacturing, Supply & Trading of Dental Products

*Further clarifications regarding the scope of this certificate and applicability of GMP requirements may
be obtained by consulting the organization.*

Original Certification Date	: 29/05/2021	Surveillance Audit	
Current Certification Date	: 29/05/2021	Use On	Use On
First Surveillance Due on	: 28/05/2022	Re-issuance	Re-issuance
Second Surveillance Due on	: 28/05/2023		
Certificate Expiration Date	: 28/05/2024		





Certificate No: ABGMP5214364

For BMQR
 No.5, 2nd Floor, Sathyamoorthy Road, Thiruvalluvar Nagar, Thirumangalam,
 Anna Nagar West, Chennai - 600 040, Tamilnadu, India.
 email: iso@gmqr.com, Web: www.bmqr.com
 Ph: 044-26152136

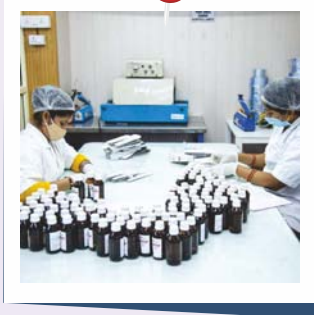
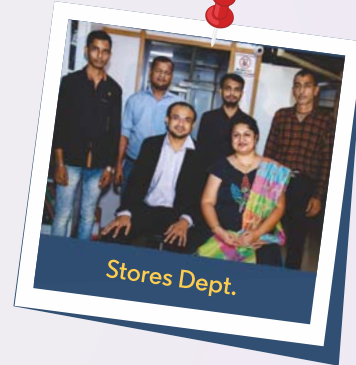
The certificate will remain current subject to the company maintaining its system to the required standards. This will be monitored regularly by BMQR Certifications Pvt. Ltd.
 This Certification details and effectiveness are listed at www.bmqr.com. Registration does not assure the quality of products produced by a Quality System.
 This Certificate is granted based on the latest sampling audit as per ISO 22716:2007 and BMQR is not responsible for client's failure to maintain documented quality system.
 This certificate is the property of BMQR Certifications Pvt. Ltd. and to be retained upon request.

ACCREDITATIONS



Shiva Products SQUAD

- Visions are realized under multiple eyes



Teamwork is the secret that makes common people achieve uncommon results.

- Ifeanyi Enoch Onuoha



ABOUT US

S : Significant
H : High-Quality
I : Innovative
V : Value your Business
A : Ace

Established in the year 1998, we are now an eminent **ISO 13485:2016** accredited company (by TUV SUD, Germany) with more than two decades of experience in the industry. We cater a wide range of products such as Dental Consumables including Endo, Prostho, Restorative, Lab range, dental alloys, jewellery waxes, etc...

We are proud to be recognized as a renowned manufacturer and exporter of premium quality Dental Consumables under the brand name "**MAARC**". Our products are specifically made according to international quality standards.

Shiva Products has become one of the leading manufacturers in Domestic and International Market. The strong relationship and the trust of our business partners and dental professionals built over two decades of operations in India has made '**MAARC**' a trusted Brand.

Shiva Products had ventured into dental market with only 2 product portfolios. With dedicated team-work and focus on our **RRR strategy (Reliable Responsible & Reasonable)**, we are proud to have more than 120 products under our brand and many new product developments underway. We are a team of experienced professionals working with a common goal of quality production, thereby, winning the trust and faith of both national and international clients.

OUR FACILITY

Shiva Products has state-of-the-art manufacturing facility in Vasai, India. Our manufacturing facility is designed as per **ISO 13485:2016** guidelines. Being one of the fastest-growing dental products manufacturing company in India, we have always invested in building modern manufacturing facility with **in-house testing laboratory** so as to maintain our harmonized international quality standards as well as to increase our production capacities and meet the growing demands of society.

OUR VISION

TO ALWAYS REMAIN THE
MOST TRUSTED BRAND
IN DENTAL PRODUCTS

We are led by a global vision and a drive to manufacture various dental consumables comparable to international standards so as to offer customer satisfaction.

OUR MISSION

Our mission is to manufacture the right quality products and services. It guides our direction and shape the solutions we develop today for tomorrow's dentistry. The strategy that we at Shiva Products follow to deliver right quality products & services to our clients is **RRR (Reliable-Responsible-Reasonable)**.

Reliable: We at Shiva Products follow the same principle that along with success we believe in maintaining a cordial relationship with every client. This has led us to our presence in more than 40+ countries with over a million users and we strive to expand globally.

Responsible: We take pride in the success of our products and own the responsibility in improvising & raising its standards.

Reasonable: We are always open to suggestions from our Valuable Partners and End Users. We emphasize on the enhancement of our products by constant refinement – in consultation with the experts to find more effective and efficient solutions.

ASSURED QUALITY

Shiva products is highly committed to achieving and maintaining the excellent quality of all the products. We earned the trust of our clients and consumers by remaining true to our commitments. As an **ISO 13485:2016 certified company (by TUV SUD, Germany)** we take utmost care of quality while manufacturing our goods.

With increased and continuous technology advancements in dental materials and dental products, it is our utmost responsibility to ensure the quality and reliability of our products. Each operation is carefully executed under the strict supervision of trained professionals following standardized production norms and methods, thus leaving no stone unturned in ensuring premium quality and fulfilment of needs of our customers.

*Dental care is our game,
Excellence is our goal !*



ENDO
&
CONSERVATIVE
RANGE

Calahyd-RC



MTA



Calx-O



Pre op before placement



After immediately placement of Calx-O



Healing after 8 weeks

Blitz White

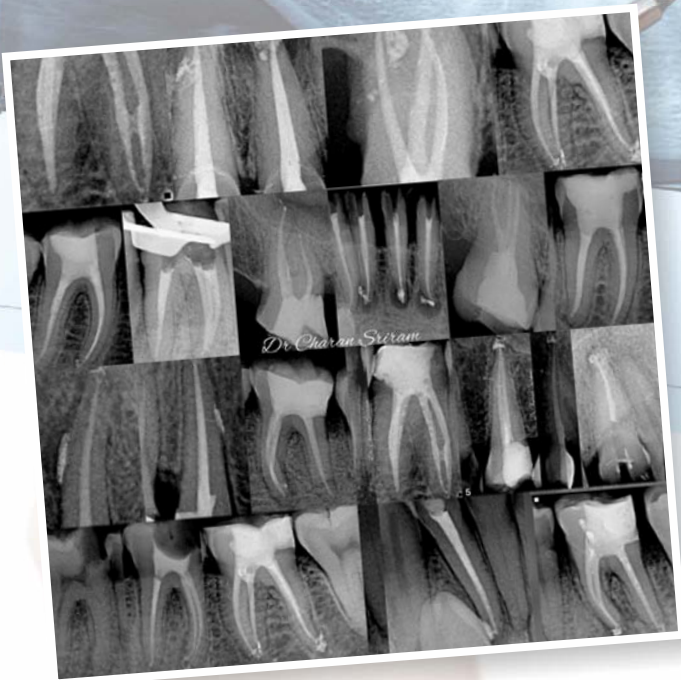
Blitz White
(In - Office Bleaching Kit)



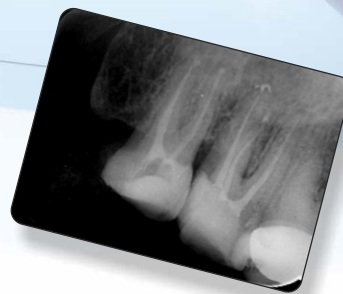
Before



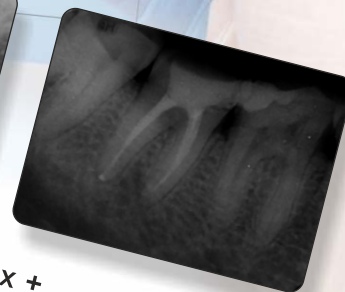
After



Sealmax-R



Sealmax +





ENDO & CONSERVATIVE RANGE



D-Sens G+



Desensitizing Agent with Glutaraldehyde

D-Sens G+ (Liquid)



Desensitizing Agent with Glutaraldehyde

Description: D Sens G + is used for the treatment of hypersensitive dentine. It achieves its effects by precipitation of plasma proteins, which reduces dentinal permeability and occludes the peripheral dentinal tubes. This inhibits flow of fluid through the tubules which is the cause of sensitivity.

	Packing	Product Code
	2 g x 1 Syr	3019/002
	5 ml	3019/L/005

Indications:

- ▶ To reduce or even eliminate pain in exposed cervical areas not requiring restoration.
- ▶ To alleviate or prevent dentinal sensitivity after preparation of teeth to receive fixed prosthesis or restorations.

Properties & Advantages:

- ▶ **Easy and Time saving:** One-step placement, no agitation or light curing required.
- ▶ Compatibility with all bonding and restorative materials.
- ▶ Controlled and accurate placement.
- ▶ Inhibits microbial growth by sealing dentinal tubules.
- ▶ Can be used after tooth preparation in order to reduce or relieve hypersensitivity of the dentine before using the denture or definitive restoration.

D-Sens P



Desensitizing Agent with Potassium Nitrate

Description: D-Sens P is a sustained release, 3-4% potassium nitrate and 0.11% weight by weight fluoride ion, sticky, viscous gel. D-Sens P is made to be used in a custom tray.

Packing	Product Code
3 g x 1 Syr	3020/003

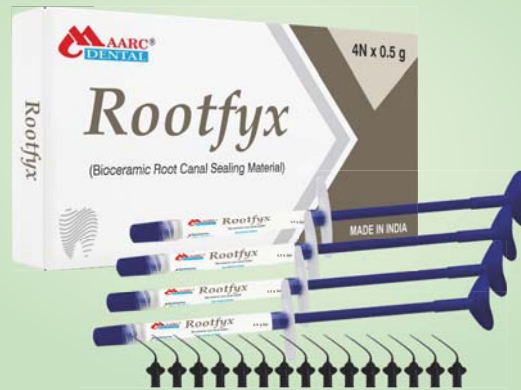
Indications: D-Sens P desensitizing gel provides a film-like varnish for sensitive teeth, sealing dentinal tubules of exposed dentin and other areas where post-operative sensitivity is a concern. The product is used either by a dental professional in the office or provided to the patient for home treatment of dentin sensitivity.

Properties & Advantages:

- ▶ **At home or office Desensitizer:** potassium nitrate in aqueous base makes it ideal to serve both purpose.
- ▶ **Swift Action:** Thixotropic formulation with sustain releasing properties which quickly acts on sensitivity arising due to brushing, thermal or chemical changes & whitening. It also acts in on exposed root.
- ▶ **Fluoride releases:** remineralises exposed surfaces and prevents further sensitivity.



Rootfyx



Bio-Ceramic Root Canal Sealer

Description: Rootfyx (Bioceramic sealer) is used for root canal filling after the removal of infected pulp tissue in the root canal. Rootfyx is in the form of a flowable paste and can be immediately inserted into the root canal using a disposable tip. This product characteristically cures slowly by absorbing the ambient water inside the root canal. It is white and aesthetic.

Packing	Product Code
0.5 g x 4 Syr with 15 Applicator tips	9107/0.5x4

Intended Use:

- ▶ Permanent Root Canal Sealing.
- ▶ To fill the root canal from the crown side.

Indications:

- ▶ Permanent root canal filling after vital pulp extirpation.
- ▶ Permanent root canal filling after pulp gangrene and temporary filling treatment.

Properties & Advantages:

- ▶ Excellent biocompatibility and good adherence to dentin.
- ▶ Good miscibility in water.
- ▶ Radiopaque.

MTA



Root Repair Material

Description: Maarc MTA is a powder & liquid system consisting of tricalcium and dicalcium silicate. Maarc MTA is **white in color** and **does not stain the tooth**. The powder is fine grained which makes it ideal to be used as a sealer / in putty consistency as desired. The pH of the mix is higher than 10.5 which makes it the best material for root repair.

Packing	Product Code
1 g powder, 5 ml liquid, measuring scoop	8601/001
180mg + 2ml (Unidose Kit)	8601/002

Intended Use: Root and Pulp treatment material

Indications:

- ▶ Indirect pulp capping
- ▶ Pulpotomy
- ▶ Root-end filling
- ▶ Direct pulp capping / partial pulpotomy
- ▶ Apexogenesis & Apexification
- ▶ Sealing
- ▶ Cavity liner / base
- ▶ Perforation repair
- ▶ Obturation

Properties & Advantages:

- ▶ Excellent Handling Properties.
- ▶ Fine Grain.
- ▶ Fast Setting.
- ▶ Pure Mineral Tech: No Discoloration.
- ▶ High pH.
- ▶ Biocompatible.
- ▶ Promotes mineralization of tissue.
- ▶ High Strength makes it suitable as base restoration material.
- ▶ Good radiopacity.



CeraSeal-B



Bio Ceramic Sealer

Description: MAARC CeraSeal-B is MTA based Bio-ceramic Root Canal Sealer.

Packing	Product Code
1 g powder, 5 ml liquid, measuring scoop	8501/001

Intended Use: Sealing of root canals of teeth during endodontic treatment.

Indications: Permanent obturation of root canal of teeth with obturation point.

Properties & Advantages:

- ▶ It is resin and monomer free and ensures zero shrinkage and biocompatibility.
- ▶ When mixed, produces mixture with desired flow and adhesion.
- ▶ Its high pH and Bioactive properties help remineralization due to hydroxy-apatite formation.
- ▶ It has good radiopacity & due to its purity it will not stain teeth.

Blitz White



In-office Tooth Whitening kit

Description: It is 35% hydrogen peroxide based in-office tooth whitening system requiring minimal chair time. It contains desensitizers to maximize patient comfort.

Packing	Product Code
2 x 0.4 g Powder + 2 x 3 ml Liquid + 1 x 3 g Gingiva Shield + 2 x Micro Brushes + 2 x Dispensing Tips	8801/001

Indications:

- ▶ Lightly etching away surface staining on vital and non-vital teeth.
- ▶ Assisting in the brightening of discoloured teeth.
- ▶ Removal of surface stains on teeth discoloured by
 - Medications, such as tetracycline, minocycline.
 - Fluorosis.
 - Food related stains.

Properties & Advantages:

- ▶ In-office system with De-sensitizing agent.
- ▶ Less post procedural sensitivity.
- ▶ Quicker Whitening Result.
- ▶ Contains Fluoride for Re-mineralization.

Sealmax +



Root Canal Sealer with MTA

Description: Sealmax+ is a MTA based Bioceramic root canal sealing material supplied in the form of powder and resin. The powder and resin are mixed to produce a root canal sealing material of excellent sealing capacity and tissue compatibility. As a result of its close adaptation to the walls and hydrophobic nature, Sealmax + allows tight sealing of root canal during obturation.

Packing	Product Code
3 g powder, 5ml liquid and dispensing scoop	8011/001

Intended Use: Sealing of root canals during obturation in the secondary dentition with or without the aid of obturation points (gutta-percha).

Indications: Permanent obturation of root canal of teeth with obturation point.

Properties & Advantages:

- ▶ **Filled with Bio-ceramics (MTA):** Contains more than 20% of bio-ceramic material.
- ▶ **No moisture required for setting:** Activators in powders makes resin set.
- ▶ **Calcium hydroxide release on surface when encounters moisture:** Bio-ceramic fillers on surface when exposed to moisture releases ions and this raises pH of exposed surface, this also helps in inhibiting bacterial growth.
- ▶ **Favours bone formation:** Ion release enhances bone formation.
- ▶ **Eugenol free:** No long term post operative pain reported till date.
- ▶ Grain free.
- ▶ Ideal handling properties.
- ▶ Excellent radiopacity.



Sealmax -R



Resin based root canal sealer

Description: Sealmax-R is a resin based root canal sealing material supplied in the form of powder and liquid. The powder and liquid are mixed to produce a root canal sealing material of excellent sealing capacity and tissue compatibility. As a result of its close adaptation to the walls and hydrophobic nature, Sealmax-R allows tight sealing of root canal during obturation.

Packing	Product Code
10 g powder, 10 ml liquid, measuring scoop and mixing pad	8001/001

Intended Use: Sealing of root canals during obturation in the secondary dentition with or without the aid of obturation points (gutta-percha).

Indication: To seal the root canals of teeth.

Properties & Advantages:

- ▶ Eugenol free.
- ▶ Insoluble in water and non-degradable.
- ▶ Grain free.
- ▶ Hydrophobic.
- ▶ Tissue tolerant, most ideal viscosity.
- ▶ Negligible shrinkage.
- ▶ Complete impervious seal.
- ▶ Excellent adhesion.
- ▶ Best intracanal sealing.
- ▶ Excellent radiopacity.

D-Vitz



Pulp Devitalizing Paste

Description: It is a pulp devitalizing paste which provides powerful pulp devitalizing properties because of paraformaldehyde & lidocaine. It is Arsenic free paste.

Packing	Product Code
3 g syringe + 5 Applicator tips	9003/003

Indications: Used for Devitalization of the pulp.

Properties & Advantages:

- ▶ D-vitz should be used when a preparation for pulp devitalization is advisable and when an arsenic-free preparation is preferred. The active ingredient is Paraformaldehyde, a coagulant which acts on albumin and confers the required fibrous consistency to the pulp to facilitate its subsequent extirpation.
- ▶ Fast acting & pain relieving paste.
- ▶ Easy to Apply.
- ▶ Controlled Flow.

F-Sol



Formocresol Solution

Description: It is used for vital pulpotomy of primary teeth & as a temporary intracanal medicament during the root canal therapy. It is a dental pulp mummification material that is used to fasten the alive pulps.

Packing	Product Code
15 ml	3012/015

Indications: Indicated as a disinfectant and devitalizing solution used as part of endodontic treatment.



ENDO & CONSERVATIVE RANGE



Endo Paste



17% EDTA with Carbamide Peroxide Paste

Description:

Endopaste is a ready-to-use Ethylene Diamine Tetracetic Acid (EDTA) and carbamide peroxide paste, packed in Multi-dose, Plastic dispensing syringe. It is both lubricating and chelating material in paste form, to be used during cleaning and shaping of the root canals during endodontic treatment.

Endogel-RC is in gel form and **Endo-L** is in liquid form, they are ready to use water-soluble Ethylene Diamine Tetracetic Acid (17% EDTA) for root canal cleaning. They are both lubricating and chelating material. They are non sterile devices & does not require sterilization while being used. Endo-L is a smear layer remover.

Endogel-RC



17% EDTA Gel

Packing	Product Code
Endo Paste: 3 g x 1 Syr + 3 Applicator tips	9203/003
Endogel-RC: 3 g x 1 syr + 3 Applicator tips	9202/003
Endo-L: 15ml Bottle Refill	9201/015
Endo-L: 100ml Bottle Refill	9201/100

Indications:

- ▶ For use as root canal lubricant during mechanical instrumentation in endodontic treatment of teeth.
- ▶ For use as chelating agent during cleaning and shaping of canals in endodontic treatment of teeth.
- ▶ For use as a root canal conditioner during chemico-mechanical preparation of root canal and shaping the canal, aiding in the softening of the calcifications and removal of debris from the prepared tooth.

Endo-L



17% EDTA Liquid

Properties & Advantages:

- ▶ Effective chelating.
- ▶ Lubrication.
- ▶ Deburring water-soluble material.
- ▶ 17% Liquid based EDTA.
- ▶ Used to flush out the debris from canal.
- ▶ Removes the smear layer from dentinal walls.
- ▶ It facilitates root canal preparation.
- ▶ Also helps in removal of calcium hydroxide oil based from the canals.
- ▶ Mechanically activated using an endo brush.

Twin Kleen



Single step – Chelation and Irrigation

Description: Twin Kleen is a mild chelating agent HEBP with short term compatibility with sodium hypochlorite. The combination eliminates the debris impaction in the anatomical irregularities. The combination also reduces the AHTD (Accumulated Hard Tissue Debris) and prevents smear layer formation during rotary instrumentation. By mixing Twin Kleen with sodium hypochlorite, one can avoid the irrigation sequence and the combination can be used as one irrigating solution. The combination can be used during instrumentation and as a final rinse solution. Use with Maarc Sodium Hypo 3% or 5% to get best results (3% Preferred).

Packing	Product Code
100 Capsules	3014/100
50 Capsules	3014/050
25 Capsules	3014/025

Intended Use: One-step root canal irrigation system.

Indications: Irrigation of root canal during endodontic therapy to remove the debris and smear layer alongside softening of the dentinal surface aiding in easy instrumentation and as a final rinse solutions.

Properties & Advantages:

- ▶ Mild Chelating Agent.
- ▶ Proteolytic Agent.
- ▶ Lubricating Agent.
- ▶ Prevents smear layer.



Sodium Hypochlorite



Sodium Hypochlorite

Description: 3% & 5% Sodium Hypochlorite solution, aids in easy debridement of both hard and soft tissue debris from the root canals. Prevents clogging of the canals with debris.

Packing	Product Code
100 ml, 250 ml, 500 ml, 5 ltr (3%)	3009/100, 3009/250, 3009/500, 3009/005
100 ml, 250 ml, 500 ml, 5 ltr (5%)	3004/100, 3004/250, 3004/500, 3004/005

Indications:

- ▶ Irrigation of root canals during endodontic treatment.

Properties & Advantages:

- ▶ Ready to use solution, specially formulated for use in endodontics.
- ▶ Buffered and stabilized formulation, that maintains the solution properties throughout its shelf life.
- ▶ Facilitates reaming through dissolution of the organic content of the root canal system.

Chloro-HX (2%)



2% Chlorhexidine Solution

Description: 2% Chlorhexidine Solution that is used to clean & disinfect before many dental procedures. This greatly reduces the potential for post-operative sensitivity caused by residual Bacteria.

Packing	Product Code
100 ml	3010/100
500 ml	3010/500

Mercury



Mercury

Intended Use: Used as a dental amalgam after mixing it with powdered alloy.

Packing	Product Code
30 g	3001/030
225 g	3001/225

Properties & Advantages:

- ▶ 99.99% pure.
- ▶ An especially triple distilled, chemically pure mercury.
- ▶ Recommended for preparing superior dental amalgam in combination with either of the Alloys in powder form.

Calx



Temporary Root Canal Filling Material

Calx-O



Temporary Root Canal Filling Material

Calcium Hydroxide Powder



Temporary Root Canal Filling Material

Description: It is a water based white paste consisting of premixed Calcium Hydroxide and Barium Sulphate. Supplied in a multi dose syringe with disposable pre-bent cannulas for dispensing.

Packing	Product Code
Calx: 3 g x 1 Syr + 3 Applicator Tips	9101/003
Calx-O: 1.5 g x 2 Syr with 4 Applicator tips	9102/1.5 x 2
Calx-O: 3 g x 1 Syr + 3 Applicator Tips	9102/003

Intended Use: To be used as a root canal dressing and filling material during endodontic treatment of teeth and as a temporary filling material for pulp capping and pulpotomies.

Properties & Advantages:

- ▶ Non setting paste water-based paste.
- ▶ Easy handling and easy direct application at the intended site.
- ▶ Ideal for temporary filling of root canal and during pulpectomy.
- ▶ Excellent radiopacity.
- ▶ Premixed, ready to use paste.
- ▶ Syringe type for easy delivery of the paste directly into the canal.

Description: Calcium hydroxide is a multi-purpose dental material, when mixed with DM water/Saline water, it achieves paste consistency. It provides the induction effect for hard tissue induction and deposition.

Packing	Product Code
15g	5002/015B

Intended Use: To be used as a root canal dressing and filling material during endodontic treatment of teeth and as a temporary filling material for pulp capping and pulpotomies.

Properties & Advantages:

- ▶ Easy handling and easy direct application at the intended site.
- ▶ Ideal for pulp capping / pulpotomy, as the consistency of the Calcium Hydroxide paste can be prepared as desired.



ENDO & CONSERVATIVE RANGE



Calahyd-RC



Calcium Hydroxide Paste (With Iodoform)

Calahyd +



Calcium Hydroxide Paste (With Iodoform)

Description: Calahyd – RC is a silicon oil based yellowish paste consisting of premixed Calcium Hydroxide and Iodoform. Supplied in a multi dose syringe with disposable pre-bent cannulas for dispensing. Used to prevent bacterial contamination of the canal, as the two ingredients improve the induction effect for hard tissue induction and deposition.

Packing	Product Code
1.5 g x 2 Syr + 4 Applicator tips	9103/15X2
1.5 g x 2 Syr + 4 Applicator tips	9151/15X2

Intended Use:

- ▶ To be used as a root canal dressing and filling material during endodontic treatment of secondary teeth and as a long-term root canal filling/sealing material after pulpectomy/root canal treatment in deciduous teeth.

Indications:

- ▶ For pulp capping and pulpotomy.
- ▶ Apexifications and hard tissue formation.
- ▶ Temporary sealing material for infected root canals.

Properties & Advantages:

- ▶ Non setting paste with oil base.
- ▶ Easy handling and easy direct application at the intended site.
- ▶ Ideal for infected root canal and pulpectomy in deciduous teeth.
- ▶ Disposable tips for prevention of cross-contamination.
- ▶ Premixed, ready to use paste.
- ▶ Syringe type for easy delivery of the paste directly into the canal.

T-Fill



Temporary Non-Eugenol Cement
(Temporary Filling Material)

Description: T-Fill is a ready to use temporary filling material (Type II- Temporary Cement for bases and temporary restoration) in paste form, self-curing under humidity, to be used for temporary filling of cavities during restorative or endodontic treatment of teeth.

Packing	Product Code
40 g, 30 g White (Mint Flavor)	5507/040, 5507/030
40 g, 30 g Pink (Mint Flavor)	5507/P/040, 5507/P/030
40 g, 30 g Pink (Strawberry Flavor)	5507/S/040, 5507/S/030
40 g, 30 g Pink (Rose Flavor)	5507/R/040, 5507/R/030
40 g, 30 g Mint Green (Green Apple Flavor)	5507/GA/040, 5507/GA/030

Intended Use:

- ▶ Temporary filling of teeth

Indication:

- ▶ Temporary filling material during endodontic and restorative treatment of teeth.

Properties & Advantages:

- ▶ Eugenol-Free with non-irritating properties.
- ▶ Higher adhesion to teeth structure.
- ▶ Micronized and homogeneously mixed for grain free consistency.
- ▶ Quick setting in moist conditions.
- ▶ There is minor but even expansion on setting so no cracks develop, giving best sealing, hence protecting the pulp.



ENDO & CONSERVATIVE RANGE



Gsol



Gutta Percha Solvent

Packing	Product Code
15 ml	3006/015

Intended Use: Gsol is intended for use during repeated root canal treatments to remove gutta-percha cones from the root canal.

Indication: Removal of the gutta-percha during re-root canal treatment of teeth.

Properties & Advantages:

- ▶ It is an orange oil (D-limonene) based Gutta Percha Solvent used for removing gutta percha at the time of Re-root canal treatment.
- ▶ Fast dissolving of G.P. points.
- ▶ Built on natural constituents - doesn't cause irritation to mucosa & periapical tissue.

ETC-37



Etching Materials (37% Phosphoric Acid)

Description: ETC-37 is a specially formulated surface etching materials which can be used for preparing the tooth enamel and dentin to receive bonded restorations. Supplied in the form of a thixotropic gel/liquid it provides excellent control over the flow of the etchant. The device allows easy manipulation by the dentist and etch the surface to precise extent. It can also be used to etch the surfaces of enamel prior to restorations with resin based restorative materials.

Packing	Product Code
3 g x 1 Syr + 3 Applicator tips	9401/003
25 g x 1 Syr + 10 Applicator tips + 1 Connector	9401/025
5 g x 3 Syr + 10 Applicator tips	9401/5x3
15 ml x 1 liquid bottle refill	9402/015

Intended Use:

- ▶ Etching of the surfaces of teeth which are to receive resin based/ bonded restorations.
- ▶ Etching of the prepared access cavity in endodontically treated teeth to receive bonded restorations.
- ▶ Etching of both enamel and dentinal surfaces of teeth prior to resin based restorations.
- ▶ Etching of the surfaces of teeth for bonding of brackets in orthodontic treatment of teeth.

Ziego



Zinc Oxide + Eugenol Kit

Zinc Oxide



Eugenol



Eugenol Based
Temporary Filling Material

Description: ZIEGO (Zinc oxide + Eugenol) is a temporary filling material (Type II Temporary Cement for bases and temporary restoration) supplied in powder and liquid form, which sets by an acid-base reaction by formation of zinc eugenolate chelate once the powder and liquid are mixed in the recommended proportion. The reaction is catalyzed by water and is accelerated by the presence of metal salts.

Packing	Product Code
30 g Powder + 15 ml Liquid (Ziego)	8701/001
30 g, 100 g, 500 g (Zinc Oxide Powder)	5001/030, 5001/100, 5001/500
15 ml, 30 ml, 110 ml (Eugenol)	3002/015, 3002/030, 3002/110

Intended Use: Temporary filling of teeth during restorative / endodontic treatment of teeth.

Indication: Temporary obturation / restoration / filling of teeth.

Properties & Advantages:

- ▶ Easy handling and easy direct application at the intended site.
- ▶ Ideal for temporary filling of teeth.
- ▶ The cement is non-irritating, and creates a perfect closure of the cavity.
- ▶ Maintains a good coronal seal of the cavity, preventing contamination.



PROSTHO RANGE





Bite Registration Wax



Bite Registration Wax

Thickness: 1.8 to 2.2 mm

Size: 160 mm x 85 mm

Description: BRW/Classic BRW/Perfect Bite is a type of impression wax with/ aluminum fillers used in direct technique to record the patient's upper and lower teeth in the bite position to assist in the making and fitting of dental prosthesis and indirect restorations.

Packing	Product Code
Bite Registration Wax (Aluminum Filled)	2202/010
Classic BRW Extra Hard (Aluminum Filled)	2207/010
Perfect Bite (Zero Tolerance)	2213/010
Bite Wafers	2210/010

Intended Use: For registering bite of patient for prosthetic application.

Properties & Advantages:

- ▶ The wax sheets are dimensionally more stable and tough, as compared to the modelling wax base plate wax and does not distort easily due to external factors.
- ▶ The impression of the bite is more refined when recorded using BRW, due to softening of the wax evenly by the aluminum filler particles which disperse the heat.
- ▶ The shrinkage after cooling is negligible due to crystallization of wax around the resin & aluminum particles.

Bite Rims



Description: Bite Rims are occluding surfaces built on temporary or permanent denture bases for the purpose of making maxillomandibular relation records and for arranging teeth.

Packing	Product Code
10 N	2214/010

Bite Blocks



Description: Pre-fabricated bite blocks for time-saving fabrication of precise bite moulds. U-shape, pliable & easy to place in working areas.

Packing	Product Code
10 N	2311/010

Soft-Liner



Soft Denture Reline Material /
Tissue conditioner

Description: Soft denture reline material / Tissue conditioner

Packing	Product Code
50 g Powder + 25ml x 2 Liquid + Dropper + Measuring Cup	8005/001

Intended Use:

- ▶ For the temporary re-basing (relining) of acrylic dentures.
- ▶ Conditioning tissue.

Properties & Advantages:

- ▶ Comfortable tissue conditioning.
- ▶ Absorbs shock efficiently.
- ▶ Enhances denture stability.
- ▶ Excellent denture adhesion.

HF Gel



9.6% Porcelain Etching Gel

Description: HF Gel is a porcelain etchant containing 9.6% buffered hydrofluoric acid in gel form that must be handled with extreme care (as per IFU). HF Gel has been buffered, gelled and packaged to minimize problems, provided that it is used in accordance given instruction in the package. Porcelain etchant improves the mechanical bond between porcelain and adhesive/cement by increasing the surface area of the porcelain. The effect is similar to sandblasting but is more controlled and effective.

Packing	Product Code
1 ml x 2 syr + 4 applicator tips	9801/1x2

Intended Use:

- ▶ Cementation of porcelain restorations.
- ▶ Repair of porcelain restorations.
- ▶ Etching porcelain crown surface for orthodontic treatment.

Properties & Advantages:

- ▶ 9.6% buffered hydrofluoric acid gel.
- ▶ Better stability.
- ▶ Fast porcelain etching.
- ▶ Controlled flow.
- ▶ Precise placement.
- ▶ Selective etching.
- ▶ High visibility.



PROSTHO RANGE



Articulating Paper



Articulating Paper

Description: MAARC articulating paper are coated with easy transfer ink so it accurately highlights occlusal contacts.

Product Color: Red / Blue.

Packing	Standard Pack	Economy Pack
40 mic - Red – 1 Box containing 10 books	5515/001	5515/001/E
40 mic - Blue – 1 Box containing 10 books	5519/001	5519/001/E
40 mic - Red / Blue – 1 Box containing 10 books	5511/001	5511/001/E
100 mic - Red – 1 Box containing 10 books	5517/001	5517/001/E
100 mic - Blue – 1 Box containing 10 books	5521/001	5521/001/E
100 mic - Red / Blue – 1 Box containing 10 books	5513/001	5513/001/E
40 mic - Red / Blue – 1 Box containing 10 books (Horseshoe)	5523/001	5523/001/E

Intended Use: Used as diagnostic device in dentistry to highlight occlusal contacts and the distribution of occlusal forces.

Properties & Advantages:

- ▶ It comes in various thickness.
- ▶ Maarc articulating paper comes with progressive color transfer and aids in visualizing static occlusion.
- ▶ Because of its low thickness and flexibility, it adapts perfectly to cusps and fossae, making it extremely precise and therefore suitable for more delicate preparations.

Hemostaz Gel / Solution



Hemostatic Gel & Solution with
25% Aluminum Chloride

Description: Hemostaz Gel/Solution causes profound hemostasis – controls bleeding by contracting the tissues to seal the injured blood vessels. Thereby arresting the bleeding within few seconds of application & reducing the chair side time for moisture control. It controls moisture from the crevicular seepage by absorption of the crevicular fluid and momentary shrinking the epithelial tissue. Eliminating sulcular fluid contamination during restorative treatment allowing for optimal bonding of the adhesives & liners. It physically displaces the tissues for superb marginal access with minimal pressure and no danger of rupturing epithelial attachment, providing unsurpassed kindness to hard and soft tissues. Hemostaz Gel/Solution requires much less time and force than using a gingival retraction cord. It decreases the need of repeat impressions by aiding in precise recording of the finish lines and margins.

Packing	Product Code
15 ml	3016/015
3 gm	3018/003

Indications:

- ▶ Hemostaz Gel/Solution is a topical hemostatic agent that can be used to control bleeding in the gingival sulcular space there by preventing contamination during direct bonding procedures.
- ▶ Hemostaz Gel/Solution can also be used for moisture control during proximal restorative treatment; as a hemostatic agent during gingivectomy and gingivoplasty, and to control bleeding from hyper active pulp tissue or pulp polyps during pulpotomy.
- ▶ Hemostaz Gel/Solution is best suited to arrest surface capillary bleeding during various dental procedures where moisture control is needed, including fixed prosthodontic treatment, restorative-operative treatments, periodontal treatment, etc.

Mock-Up Wax



Description: Mock up/Wax up is a production of wax models in the laboratory based on the impression of the existing situation in your mouth. It allows the alignment of patients' wishes and real possibilities for developing a prosthetic replacement.

Packing: Each Packet of 'MAARC' Mockup Wax contains 12 sheets wrapped in non-adhesive silicone paper to facilitate easy removal.

Color: White **Thickness:** 1.3 mm – 1.5 mm **Size:** 160mm X 90 mm

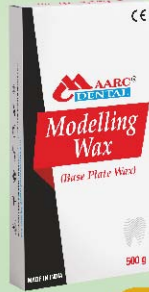
Packing	Product Code
12 N	2201/225
200 g (Regular)	2201/200

Properties & Advantages:

- ▶ It simulates the final outcome. The result is temporary and can be changed according to the patient's desire.
- ▶ It can be repeated as many times as needed in order to select the best possible solution.
- ▶ It helps create trust between the patient and the dentist.
- ▶ It allows the dentist to evaluate the patient's desires and change the treatment plan accordingly.



Modelling Wax



Base Plate Wax

Description: It is a type 2 low-fusing wax used for indirect wax technique. It is made of low-molecular-weight esters of fatty acids derived from natural or synthetic components, such as petroleum derivatives, that soften at a relatively low temperature (45-55°C).

Colour: It comes in various shades such as pink, light pink, red.

Type: Soft, Medium, Hard & Extra-hard.

Intended Use: Fabrication of occlusal rims, spacer to protect the relief areas and to establish the initial arch form in the construction of complete dentures, fabrication of trial denture base in the process of making complete or partial dental prosthesis, production of gypsum casts, non metallic denture bases, registering of jaw relations, and laboratory work.

Product Type	Packing	Product Code
Modelling Wax Regular	12 N, 200 g, 500 g	2001/012, 2001/200, 2001/500
Modelling Wax Red	12 N, 200 g, 500 g	2002/012, 2002/200, 2002/500
Modelling Wax Type 1 Pink, Light Pink & Transparent	12 N, 500 g	2003/012, 2003/500, 2004/012, 2004/500, 2005/012, 2005/500
Modelling Wax Type 2 (Medium Hard) Light Pink & Transparent	12 N, 500 g	2006/012, 2006/500, 2008/012, 2008/500
Modelling Wax Flexi	12 N, 500 g	2007/012, 2007/500
Modelling Wax Type 3 (Hard) Pink, Light Pink & Transparent	12 N, 500 g	2010/012, 2010/500, 2009/012, 2009/500, 2011/012, 2011/500
Modelling Wax Type 5 Pink	12 N, 500 g	2012/012, 2012/500
Modelling Wax Type 2 Pink - 2	500 g	2013/500
Modelling Wax Type-6 (Plasti Wax)	12 N, 12 N x 4 Pkts	2015/012, 2015/048

Properties & Advantages:

- ▶ The wax does not fragment into flakes when molded after softening, and provides a framework for registering of jaw relations and arrangement of the prosthetic teeth.
- ▶ The wax attains a plastic state at room temperature, hence during the trials the teeth do not get displaced from their defined layout as per the patient's jaw model under the ideal working pressure of try in models.
- ▶ The wax melts out during the process of burnout/ dewaxing to create the mold space into which the acrylic is filled for making the final denture prosthesis.

Shellac Base Plates



Intended Use: Fabrication of trial denture base and custom impression tray during prosthetic rehabilitation in edentulous patients.

Type: It comes in different formulations for different climatic conditions (LMP / HMP / Tropical / Al. Filled).

Colour: Brown / Yellow/ Pink / Aluminum.

Description: Shellac base plate contains shellac which is a natural resin having low fusing properties and fillers for brittleness making it ideal for fabrication of trial denture base during making of Acrylic / Flexible dentures.

Thickness: Upper / Lower Base Plate: 1.3mm, 1.7mm, 2.0mm, 2.5mm and 3.0mm (+/- 0.15mm)

Packing: Each Packet of 'MAARC' Base Plate contains 8 upper and 4 lower plates, 12 Pcs, 50 Pcs and 100 Pcs.

Packing*	Product Code
Tropical type - Brown/Pink	1001 to 1024
LMP Type - Pink	1101 to 1109
HMP Type - Pink	1201 to 1210
Al. Filled - Silvery Grey	1301 to 1310
Tropical Green & Tropical Yellow	1023 & 1024

* Refer website for complete re-order numbers.

Properties & Advantages:

- ▶ Low fusing natural resin. Dimensionally stable at working room temperature.
- ▶ They are ready to use maxillary & mandibular plates – 8 upper & 4 lower.
- ▶ Optimum heat resistance to minimize overheating of the plate.
- ▶ Easily adaptable on heating and easy to work with.
- ▶ Retain the shape stability and do not warp back on cooling.
- ▶ Optimum mechanical strength to resist breaking during try-in denture.
- ▶ Does not adhere to plaster.

Dental Special Tray



Description: An efficient special tray system for use with all impression materials.

Thickness: 2.2mm (+/- 0.15mm) aluminum filled – to get even impression

Packing	Product Code
10 N	1309/010

Indications: Fabrication of custom tray for impression making.

Properties & Advantages:

- ▶ Time saving and economical as compared to light cure and cold cure tray.
- ▶ No toxic gases as in cold cure.
- ▶ STP is low fusing thermo-plastic compound with high flow. So does not melt wax spacer and flows through stoppers.
- ▶ It has heat conducting properties, so no worries when applying hot border moulding compound. Heat spreads immediately and plate dimension remains unchanged.
- ▶ Stronger than conventional shellac plates.
- ▶ Easily fused to each other so handle can be made from excess.
- ▶ Excess can be cut easily with scissors when hot and when cold, trim with burs, abrasive wheels, etc.
- ▶ Borders can be folded easily.
- ▶ Modify the tray anytime so best border moulding can be achieved.



PROSTHO RANGE

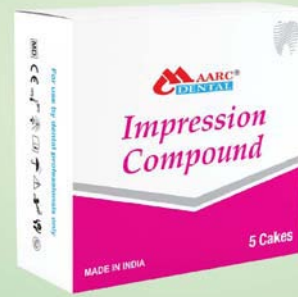


Impression Compound Sticks



Green tracing sticks

Impression Compound



Description: Impression Compound Sticks (Green tracing sticks) is a thermoplastic material supplied in the form of sticks (type-1 low fusing impression compound). It is a low fusing material primarily used for border extensions on custom impression trays as it attains uniform plasticity. Attains high viscosity at comfortable temperatures 55-65°C making it ideal for recording the full depth of the sulcus, recording of the borders during impression making for preparation of removable dental prosthesis, taking functional and relining impressions. Provides wide working area due to extra working time & quick hardening property when immersed in cold water.

Maarc Impression Compounds are thermoplastic impression materials available in both cakes and sticks form.

Thickness of Sticks: 113 x 9 mm dia weighing approx. 10g each.

Packing	Product Code
Impression Compound Sticks (Green Tracing Sticks) 10 N, 15 N & 100 N	1501/010, 1501/015, 1501/100
Impression Compound Pack of 5 cakes	1503/005

Intended Use: Recording border extensions on custom impression trays. Making of functional and relining Impressions.

Properties & Advantages:

Impression Compound Sticks (Green Tracing Sticks):

- ▶ Suitable for muscle trimming work.
- ▶ Fast and uniform plasticity.
- ▶ Quick hardening in cold water.
- ▶ Wide working area.

Impression Compound:

- ▶ It softens at 60°C.
- ▶ It is excellent for taking primary impression of edentulous teeth and becomes stable after cooling and are shrinkage free.
- ▶ It can be used with matrix band for single tooth impressions.

Inlay Sticks



Description: Inlay/Onlay wax are type-1 waxes which soften at a temperature that is not hazardous to the dental pulp tissue, hence can be used to prepare patterns of indirect-restorations in the patient's mouth by direct-wax technique. They have uniform workability over a wide temperature range and facilitate accurate adaptation to the prepared cavity.

Thickness: L 114 x 8 mm dia of big sticks.

Packing	Product Code
10 N	2403/010

Indications: Used for the construction of wax pattern using direct wax technique, for fabrication of inlay & onlay restorations, fabrication of onlays and full coverage crowns by indirect wax technique on the die models.

Sticky Wax Sticks



Description: Wax to fix removable prosthesis. Its high adherent properties make this wax an excellent material to fix resin teeth to the anterior walls and to fix these walls to the model.

Thickness: 114 x 8 mm dia sticks weighing approx. 6 g / pc.

Packing	Product Code
10 N	2701/010
200 g	2701/200

Indications:

- ▶ It is used to hold or weld materials or pieces together.
- ▶ The Sticky Wax can also be used to connect or repairs wax patterns.

Properties & Advantages:

- ▶ It is blending of various waxes and resins and it is yellow in color.
- ▶ It melts when heated and adheres to the surface over which it is applied.
- ▶ It holds the components prior to fixation and gives a clean burnout.

Spacer Wax



Description: Wax used to hold space for impression material, baseplate wax or tissue.

Indications: To provide space for final impression material.

Thickness: 0.4 mm (+/-0.1 mm)

Packing: Upper and lower spacer wax are packed separately. Wrapped in non-adhesive silicone paper to facilitate easy removal.

Packing	Product Code
Spacer Wax Upper - 25 N	2601/025
Spacer Wax Lower - 25 N	2602/025

Properties & Advantages:

- ▶ Thin wax sheets of 0.3mm thickness – shape of upper and lower base plates.
- ▶ It increases the thickness of wax rims while making dentures using base plates.
- ▶ Provide uniform thickness of impression material.
- ▶ Use of spacer wax prevents direct contact of acrylic trays with soft tissues.
- ▶ Allows relief, stress distribution, stability & increases the accuracy of impression.



PROSTHO RANGE



Cold Cure Acrylic Resin



Denture Base Resin

Description: Self-cure acrylic resin is a chemically setting (auto polymerizing) acrylic resin used in a variety of applications in dentistry in either dough form or brush-on technique or injection moulding technique or sprinkle on technique.

Indications:

MAARC Cold Cure / Self cure (autopolymerizing) acrylic resin to be used for:

- ▶ Repair & Relining of dentures.
- ▶ Fabrication of Custom Impression Trays.
- ▶ Removable Orthodontic appliances.
- ▶ Provisional crown and bridges.

Recommended Proportion of mixing: 13 cc Powder to 10 ml Liquid.

Product Type	Packing	Product Code
Clear	100 g, 400 g, 500 g, 3 kg	6201/100, 6201/400, 6201/500, 6201/003
Pink	100 g, 400 g, 500 g, 3 kg	6202/100, 6202/400, 6202/500, 6202/003
Light Veined	100 g, 400 g, 500 g, 3 kg	6203/100, 6203/400, 6203/500, 6203/003
Dark Veined	100 g, 400 g, 500 g, 3 kg	6204/100, 6204/400, 6204/500, 6204/003
Liquid	100 ml, 400 ml, 500 ml, 4 lit	6301/100, 6301/400, 6301/500, 6301/004
Universal Pack (Clear)	400 g + 400 ml	6504/001
Universal Pack (Pink)	400 g + 400 ml	6505/001
Universal Pink (Light Veined)	400 g + 400 ml	6506/001

*Refer website for complete re-order numbers

Special Tray Material



Packing	Product Code
Special Tray Material Powder 500 g (Green)	6601/500
Special Tray Material Powder 500 g (Pink)	6602/500
Special Tray Material Liquid 250 ml (Clear)	6701/250
Special Tray Material Kit 500 g + 250 ml (Green)	6901/001
Special Tray Material Kit 500 g + 250 ml (Pink)	6902/001

Indications:

Special Tray material for:

1. Individual impression trays.
2. Base plates & stabilized base plates.

Heat Cure Acrylic Resin



Denture Base Resin

Description: Heat-cured acrylic denture resin powder is polymerised methyl methacrylate used in conjunction with heat cure acrylic liquid (methyl methacrylate monomer) to make various removable oral & maxillofacial prosthesis and pan-facial prosthesis.

Indications:

To be used for fabrication of:

- ▶ Removable complete denture.
- ▶ Removable partial denture.
- ▶ Orthodontic appliances.
- ▶ Oral & Maxillofacial prosthesis.
- ▶ Obturators.
- ▶ Relining & Rebasing of dentures.

Recommended Proportion of mixing: 10 cc Powder to 5 ml Liquid.

Product Type	Packing	Product Code
Clear	100 g, 400 g, 500 g, 3 kg	6001/100, 6001/400, 6001/500, 6001/003
Pink	100 g, 400 g, 500 g, 3 kg	6002/100, 6002/400, 6002/500, 6002/003
Light Veined	100 g, 400 g, 500 g, 3 kg	6003/100, 6003/400, 6003/500, 6003/003
Dark Veined	100 g, 400 g, 500 g, 3 kg	6004/100, 6004/400, 6004/500, 6004/003
Liquid	100 ml, 225 ml, 4 lit	6101/100, 6101/225, 6101/004
Universal Pack (Clear)	450 gms + 225 ml + 110 ml CMSL	6501/001
Universal Pack (Pink)	450 gms + 225 ml + 110 ml CMSL	6502/001
Universal Pink (Light Veined)	450 gms + 225 ml + 110 ml CMSL	6503/001

*Refer website for complete re-order numbers

Properties & Advantages:

- ▶ The longer working time (dough like phase) enables the dental technician to mould the material as per requirement.
- ▶ High mechanical strength, minimal residual monomer and longer retention of the colour are some of the exceptional features. The surface has a high lustre and negligible porosity making it ideal for the fabrication of prosthesis.



Boxing Wax



Description: Used for boxing impressions prior to pouring the model. A tacky wax that results in perfect adhesion without the application of heat.

Thickness: 160 mm x 45 mm x 1.5 mm.

Packing: Pack of 6 sheets wrapped in silicon paper to facilitate easy removal.

Packing	Product Code
6 N (6 inch)	2203/006
450 g (6 inch)	2203/450
450 g Red (6 inch)	2211/450
6 N (12 inch)	2204/006

Intended Use: Boxing Wax is used to build up vertical walls around the impression in order to pour the gypsum product to make a cast base.

Properties & Advantages:

- ▶ It is soft and tacky for boxing in impressions.
- ▶ Adheres easily to most of the surfaces.

Beading Wax



Periphery Wax

Description: It is a type of processing wax. Beading Wax is a soft wax ideal for dentists to use to bead round the edge of a functional impression prior to casting.

Thickness: 6 mm x 6 mm x 250 mm approx.

Packing: It comes in the pack of 12 strips wrapped in non-adhesive silicone paper to facilitate easy removal.

Packing	Product Code
12 N	2309/012
450 g (Red)	2315/450

Intended Use: Beading Wax is adapted around the impression borders to create the land area of the cast.

Properties & Advantages:

- ▶ It is sticky enough to easily adapt at the periphery or edge of alginate impression / final impression by hand pressure.
- ▶ It creates the base of the cast and preserves the outer portion of the cast.

Cold Mould Seal



Separating Medium

Description: Cold Mould Seal is a specially developed formulation of separating solution for universal use, suitable for both packing / pressing technique & cast moulding.

Packing	Product Code
110 ml	6401/110
500 ml	6401/500
1 liters	6401/001
5 liters	6401/005

Used when great accuracy is not required eg.

- ▶ Flasking of denture.
- ▶ Articulating the model.
- ▶ Separation of model from base during repair works.

Properties & Advantages:

- ▶ Makes tough film with elasticity which is unbreakable in pressure.
- ▶ Film does not chip off from plaster at pressure. High quality of the raw material guarantees optimum separation with both techniques.

Die Stone Plaster



Type 4 (Pink / Off White)

Packing	Product Code
1 kg, 3 kg, 5 kg, 20kg	4101/001, 4101/003, 4101/005, 4101/020

Intended Use:

- ▶ For crown and bridge, dies and cast partials.
- ▶ For basing dental arches and opposing models.
- ▶ For making study models.
- ▶ In use where economical yet tough, non-brittle and durable models are required.

Type IV - Specification:

- ▶ Water/ Powder: 24-26ml/100gm.
- ▶ Working Time: 5 minutes dry.
- ▶ Hard Set (Initial): 30 Minutes.
- ▶ Wet Compressive Strength: 400 kg/cm²
- ▶ Dry Compressive Strength: 800 kg/cm²
- ▶ Mixing Time: 45 seconds wet.
- ▶ Setting Time: 8-12 minutes.
- ▶ Linear Expansion (Max): 0.08%



Reinforcement Mesh



Description: The brittle nature of acrylic denture base material makes the dentures vulnerable for breakages and midline fracture. MAARC Reinforcement Mesh golden coloured or plain stainless steel, are made using 316 L grade stainless steel. The thickness of the reinforcement mesh is less than 0.25mm, the close perforations in the mesh aid in acrylic homogeneity and easy adaptability. Making the denture virtually unbreakable when the reinforcement mesh is sandwiched between layers of acrylic, during processing the dentures.

Packing	Product Code
Golden Pack of 10 N	5502 / 010
Silver Pack of 10 N	5501 / 010

Intended Use: Reinforce the denture and reduces the chances of midline fracture of the denture.

Properties & Advantages:

- ▶ Re-inforcement Mesh is made from 316 L grade stainless steel.
- ▶ These mesh are very much flexible and can easily adapt any shape.
- ▶ It is 0.25 mm thin so can be easily layered between acrylic.
- ▶ It gives denture desirable strength.

Palate Wax



Description: Pre-formed wax plates specially designed for use in dental prostheses fabrication. Helps achieve proper thickness and accurate anatomical details for precise finishing.

Packing	Product Code
10 N	2209/010

Indications: Used to improve denture quality by attaining a natural living tissue finish.

Properties & Advantages:

- ▶ For gold, chrome, acrylic, partial, or full palates.
- ▶ Beautiful aesthetics.
- ▶ Greater comfort.
- ▶ Less waxing and finishing.
- ▶ Convenient to use.

Casting Wax Sheets



Cast Partial Waxes

Description: Dental casting waxes are primarily used in the wax-up technique; this can include sculpturing, build up and inlay work.

Thickness: 0.3 to 0.6 mm.

Size: 160 mm x 90 mm.

Colour: 'Maarc' Casting Wax sheets are thin wax sheets. Available in Green color for cobalt chrome cast partial dentures.

Packing	Product Code
200 g	2206/200

Intended Use: Casting wax is used to form the pattern for a partial denture framework in a dental casting alloy such as Cobalt-Chromium.

Properties & Advantages:

- ▶ The Sheets are sufficiently thin to have thinner casting as possible without defects to reduce machining.
- ▶ They easily burn out during castings.

Eazy Tray



Description: Thermoplastic non toxic plastic beads for bite block, deprogrammer, special tray. The Easy Tray system is fast, clean and order-free and saves you from the mixing, mess and smell of fabricating acrylic trays. Just soften the thermoplastic material in hot water for less than a minute, then mould it directly in the mouth of the patient or on a model.

Packing	Product Code
100 gms	9701/100

Indications:

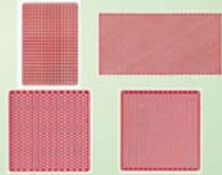
- ▶ For bite registration.
- ▶ For Lucia Jig.
- ▶ Bite Stoppers.
- ▶ Special Tray.

Properties & Advantages:

- ▶ Time Saving.
- ▶ Cost Effective.
- ▶ Accurate bite registration.
- ▶ Easy to use.



Retention Mesh



Description: Slender shape with high stability is one of the requirements met superbly by these retentions.

Important Aspects: the complexity of wax-up is reduced, thus saving time, and the partial denture prosthesis acquires optimal stability and wearing comfort. The grid retentions with holes can also be integrated very well as reinforcing grids in total maxillary dentures made of plastic.

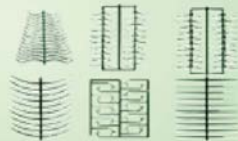
Packing	Product Code
10 N	2952/010

Indications: Reinforce the denture and reduces the chances of midline fracture of the denture.

Properties & Advantages:

- ▶ They have an optimal anatomical shape and are made of easily adapted wax. Adhesion to the investment material model is optimal.

Clasp Profiles



Description: Clasp Profile waxes are primarily used in the wax-up technique; this can include sculpturing, build up and inlay work.

Packing	Product Code
10 N	2901/010, 2902/010, 2903/010, 2904/010, 2905/010, 2906/010, 2907/010, 2908/010, 2909/010, 2910/010

Indications: Wax clasp profiles for molars and premolars are designed to ensure good hold and stability for dentures. Half-teardrop shaped cross-sections are effective at preventing food residues from getting stuck. All clasp profiles have an optimal anatomical shape and are made of easily adapted wax. Adhesion to the investment material model is optimal.

Cast Partial Waxes

Perforated Wax Retainers/ Grids Wax



Description: While retention profile shape of the various MAARC wax retention is determined by the specific indication and clinical requirement. Excellent restoration result can be achieved in both mandibular and maxillary modelling. Both partial and total dental prosthesis can be modelled easily and efficiently.

MAARC wax retentions are available in packs of 10 pieces.

Packing	Product Code
25 N (Stagge Red, Red)	2312/025, 2313/025
25 N Ladder Retainer (Red)	2314/025

Lingual Bar



Description: Pre-formed lingual connector bars. Ideal for clasps, flange, and lingual connector areas. Used by dental labs while waxing a denture.

Thickness: These are wax strips – 160 mm long x 15 mm high, with taper across 15 mm – one edge – 2.25 mm and another 1.1 mm.

Packing	Product Code
453 g (1lb)	2205 / 453

Utility Wax



Description: Utility Waxes are in the form of ropes / wires, easily shaped waxes that are especially suited for fill-ins and wax pattern repair. It can also be used to easily correct mistakes by “blending-in” with your original wax part.

Thickness: 5.0 diameter round x 30 cm long.

Packing	Product Code
Utility Wax White 5 N, 12 N, 48 N, 96 N, 250 g, 500 g	2308/005, 2308/012, 2308/048, 2308/096, 2308/250, 2308/500
Utility Wax Red 12 N, 250 g	2316/012, 2316/250

Intended Use: Utility wax is used for protecting and preserving the periphery edge in removable prosthetics. The application of utility wax on the impression tray allows a perfect transfer of the periphery edge from the impression onto the model.

Properties & Advantages:

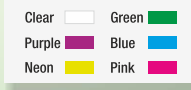
- ▶ Extremely pliable at room temperature.
- ▶ It can also be used to fill sprue bases.
- ▶ The wax can be adapted at room temperature and can be used without pre-heating.



ORTHODONTIC RANGE



Orthodontic Self-Curing Monomer



For Orthodontic Appliances

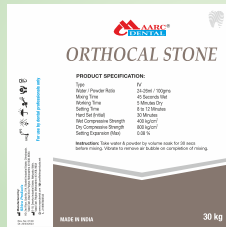
Description: Orthodontic self-curing monomer formulated with the most vibrant and attractive colours.

Packing	Product Code
100 ml (Green/Neon/Purple/Blue/Pink/Orange)	6302/100, 6303/100, 6304/100, 6305/100, 6306/100, 6307/100

Indications:

- ▶ For development of orthodontic retainers.
- ▶ Fine polymer for a better finish.
- ▶ Cold cured acrylic resin permits the simple & economical fabrication of orthodontic appliances.

Orthocal Stone



Type IV

Description: For crown and bridge, dies and cast partials. For basing dental arches and opposing models. For making study models.

Packing	Product Code
1 kg, 3 kg, 5 kg pails, 25 kg, 30 kg	4102/001, 4102/003, 4102/005P, 4102/025, 4102/030

Intended Use: In use where economical yet tough, non brittle and durable models are required.

Type IV – Specification:

- ▶ Water/ Powder: 24-26ml/100gm.
- ▶ Working Time: 5 minutes dry.
- ▶ Hard Set (Initial): 30 Minutes.
- ▶ Wet Compressive Strength: 400 kg/cm²
- ▶ Dry Compressive Strength: 800 kg/cm²
- ▶ Mixing Time: 45 seconds wet.
- ▶ Setting Time: 8-12 minutes.
- ▶ Linear Expansion (Max): 0.08%

Relief Wax



Orthodontic Appliance Relief Material

Description: Translucent in color and does not appear as an opaque wax coating on the surface of brackets.

Intended Use: Ortho relief wax- to relieve the sharper edges of orthodontic brackets from pricking.

Packing	Product Code
Silicone Base: 5 N, 5 N x 20 packs, 5 N x 50 packs	2310/005, 2310/20x5, 2310/50x5
Wax Base: 5 N, 5 N x 20 packs, 5 N x 50 packs	2317/005, 2317/20x5, 2317/50x5

Properties & Advantages:

- ▶ Soft and easy to manipulate, for easy application on the surface of orthodontic brackets.
- ▶ The unique properties of Ortho wax make it perfect for protecting your gums from the metal edges of braces.
- ▶ The wax is solid at room temperature but can be softened and shaped by the warmth of your hands.



PREVENTIVE RANGE





PREVENTIVE RANGE



Zirprophy



Zircon Prophylaxis Paste

Pro-Paste



Prophylaxis Paste

Pumice Powder



Description:

Zirprophy is a Zirconium Silicate based polishing paste used for professional tooth cleaning and polishing during prophylactic treatment. It does not break down as pumice from coarse to fine but rather removes stain smoothly due to fine particles.

Pro-Paste is a pumice based polishing paste used for professional tooth cleaning and polishing during prophylactic treatment. Pro-Paste is suitable for use in patients without any age or gender restrictions.

Pumice Powder: Micronised pumice powder to provide a smooth finish to the dentures.

Packing	Product Code
45 g, 340 g (Zirprophy)	9001/045, 9001/340
90 g, 340 g (Pro-Paste)	9002/090, 9002/340
90g, 340g (Pro-Paste) (Strawberry Flavor)	9002/S/090, 9002/S/340
500 g, 5 kg pail, 20 kg bag (Pumice Powder - Fine)	5003/500, 5003/005P, 5003/020
500 g, 5 kg pail, 20 kg bag (Pumice Powder - Medium)	5004/500, 5004/005P, 5004/020
500 g, 5 kg pail, 20 kg bag (Pumice Powder - Coarse)	5005/500, 5005/005P, 5005/020

Intended Use:

Zirprophy & Pro-Paste:

- ▶ Removal of surface, soft and hard plaque.
- ▶ Removal of extrinsic discolouration (e.g., staining from coffee, tea or tobacco).
- ▶ Cleaning and polishing restorations during professional tooth cleaning.
- ▶ Removal of residues of temporary luting material prior to definitive bonding (cementation).
- ▶ Polishing tooth surfaces during prophylactic treatment, prior to bleaching and following the removal of orthodontic devices.

Pumice Powder:

- ▶ Polishing of dentures.

Indication:

- ▶ Zirprophy & Pro-Paste are indicated for use to effectively clean and polish teeth.

Properties & Advantages:

- ▶ Better polish.
- ▶ Splatter free.
- ▶ Zirconium silicate abrasive media in Zirprophy.
- ▶ Controlled particle size (minimum post scaling sensitivity).
- ▶ Thixotropic oil free.
- ▶ Fluoride free.
- ▶ Easy removal of smoking & tartar stains.

Find Fast



Caries Indicator

Description: Find Fast is an important tool for the detection of decay /caries through the method of pigmentation of dental caries. Find Fast clearly differentiates the two layers of carious & normal dentin by staining the outer carious dentin scarlet red yet not staining the inner normal dentin. The distinct staining of only the outer, infected carious layer provides a visible, precise guide for caries removal.

Packing	Product Code
15ml (Pink)	3005/015
15ml (Blue)	3005/B/015

Intended Use: Detecting carious dentine during cavity preparation in restorative dentistry. Detection of dental caries in places difficult to identify and prevent excessive removal of normal dentin.

Properties & Advantages:

- ▶ Identifies carious dentin ensures the maximum amount of inner dentin is preserved and infected dentin is removed.
- ▶ Easily locate root canal orifices and calcified canals.

Plaque – D



Plaque Disclosing Gel

Description: Plaque-D is a water based gel that contains staining agent. It helps in differentiating plaque by colour and aids in patient oral hygiene education. The gel is easy to apply and provides good control over the flow.

Packing	Product Code
2gm x 4 syr + 4 applicator tips	9301/2x4
10gm x 1 syr + 10 applicator tips	9301/010
50 ml Liquid	3017/050

Intended Use: Dental plaque disclosing gel.

Indications: To identify plaque before oral prophylaxis. Patient education and motivation about oral hygiene.



WAXES



Inlay/Onlay Pattern Wax



Description: Inlay/Onlay wax are type-1 waxes which soften at a temperature that is not hazardous to the dental pulp tissue, hence can be used to prepare patterns of indirect-restorations in the patient's mouth by direct-wax technique. They have uniform workability over a wide temperature range and facilitate accurate adaptation to the prepared cavity.

Intended Use: Used for the construction of wax patterns using direct wax technique, for fabrication of inlay & onlay restorations, fabrication of onlays and full coverage crowns by indirect wax technique on the die models.

Properties & Advantages:

► Softer waxes with high flow are more flexible and are often used.

Packing	Color	Type	Product Code	Description
Hardness No. 1 for Dipping (200 g)	Orange	Cervical Wax	2401/200	Soft type with degree of fluidity that will allow it to flow and fit perfectly in cervical areas, high adaptation and stability to surfaces. It will wet model surface without shrinkage.
Hardness No. 2 for Built-Up (200g)	Red/Blue/Light Blue	Cervical Wax	2402/200 2409/200 2410/200	Harder than orange wax.
Hardness No. 3 for medium Built-Up (200g)	Blue/Red/Ivory	Cervical Wax	2403/200 2412/200 2413/200	Standard inlay wax wherein the pattern comes out easily from the plaster surface.
Hardness No. 4 Hard Pattern Wax (200g)	Green	Undercut Wax	2404/200	Harder than red wax used where hard pattern waxes are preferred.
Hardness No. 5 for hard Built-Up (200g)	Violet/Ivory	Undercut Wax	2405/200 2411/200	Harder than green wax – used for copying of patterns to add mechanical strength and as undercut wax.
Hardness No. 6 Copying Wax (200g)	Coffee	Sculpturing Wax	2406/200	Used for undercuts and adding mechanical stability to wax patterns of jacket crowns.
Hardness No. 7 for Margin (200g)	Magenta	Carving Wax	2407/200	Hard inlay wax. With medium flow for built up.
Hardness No. 8 Inlay free flowing Hard Wax (200 g)	Orange	Presentation Wax	2408/200	A white, enamel-like wax used to make a more aesthetic case presentation (wax-up). Easy carving properties. Also aids in the fabrication of temporaries.



Cad-Cam Wax Blanks



Description: The basic wax comes in cakes/blanks forms. They are of standard dimensions, so will fit in respective machine holders accurately. Wax has enough hardness and toughness to serve its purpose. Wax blanks / cakes have a high melting point, hence can be manipulated easily in the lab. During use in milling machine the wax will not stick to milling tool making it easy for cleaning the milling unit.

CAD/CAM Attributes:

Colour:	White, Ivory, Grey, Blue, Tooth Colour.
Appearance:	Smooth even finish disc.
Disc Thickness:	10,12,14,16,18,20,22,25 (in mm) (+/-0.2 mm).
Thickness of Outer Rim:	10 mm (+0.3 mm).
Inner Diameter:	94 mm (+/-0.2 mm).
Outer Diameter:	98.5 mm (+/-0.2 mm).
Packing:	1 pcs / box.
Type:	Open system.

Intended Use: Used for the construction of dental crown and bridgework through lost wax casting method. It can also be used for calibration of CAD / CAM machine before milling of ceramic block in CAD / CAM machine.

Sprue/Wire Wax



Description: Wax specially designed for creating sprues used in the casting of dental prostheses.

Thickness: It is in the wire form available in diameter of 1.5 mm, 2 mm, 2.5 mm, 3 mm, 4 mm, 5 mm and 6 mm.

Packing	Product Code
250 g, 500 g (1.5 mm)	2301/250, 2301/500
250 g, 500 g (2.0 mm)	2302/250, 2302/500
250 g, 500 g (2.5 mm)	2303/250, 2303/500
250 g, 500 g (3.0 mm)	2304/250, 2304/500
250 g, 500 g (4.0 mm)	2305/250, 2305/500
250 g, 500 g (5.0 mm)	2306/250, 2306/500
250 g, 500 g (6.0 mm)	2307/250, 2307/500

Intended Use: Sprue wax is used for spruing and mounting process of patterns.

Properties & Advantages:

- ▶ Stiff enough to hold the wax patterns and does not deform in shape.
- ▶ Easy burn out without residue.

Carving Wax/Wax Block



Description: Carving Waxes are made from high-quality ingredients and widely used in dentistry or dental lab. 'MAARC' Carving Wax comes in small blocks slugs and in various colors.

Thickness: 38 x 13 x 13 mm.

Packing	Product Code
40 Blocks – White	2501/040
40 Blocks – Red	2502/040
40 Blocks – Blue	2503/040
40 Blocks – Yellow	2504/040
40 Blocks – Ivory	2506/040
40 Blocks – Green	2507/040

Indications: Suitable for carving tooth anatomy specifically designed and developed for dental students.

Properties & Advantages:

- ▶ The Wax Blocks are easy to carve.
- ▶ The special feature being the wax is sufficiently hard that it does not chip off at edges on applying pressure.
- ▶ Free from air bubbles.
- ▶ Does not chip or flake.

Carding Wax/Teeth Wax



Description: We manufacture two types of carding wax-

- ▶ For Pouring method.
- ▶ For Extrusion method.

Packing	Product Code
Customizable	2801, 2802, 2803, 2804

Properties & Advantages:

- ▶ Both the waxes are very stable at temperature from 12°C to 40°C.
- ▶ Pouring waxes are suitable for automatic machines for tray filling.
- ▶ Wax firmly holds the teeth and while teeth is pulled negligible amount of wax comes along with it.
- ▶ Teeth can be re-adhered gaining similar strength.



ALLOYS





Ni – Cr Alloy

(White Metal)



Packing	Product Code
500 gms	7001/500

Composition: Ni – 68%, Cr – 15%, Cu – 15% and Rest – 2%

Technical Data: Coefficient of expansion (0-500°C): range from 13.9-14.1 μ m/m°C

Properties & Advantages:

- ▶ It is beryllium free alloy with excellent castability.
- ▶ It is reusable with addition of appx 50% fresh metal during recasting.
- ▶ It can be cast in open flame.
- ▶ It has got good burnish ability and is easy to finish.
- ▶ It can be used for making cast crown bridge and pontics and frames for hard resin crowns.

R2 Alloy

(Ceramic Alloy for PFM Bonding)



Packing	Product Code
500 gms	7002/500

Composition: Ni : 62%, Cr : 25%, Mo: 11%, Si 1%, Rest 1%.(Beryllium free).

Technical Data: Coefficient of expansion (0-500°C): range from 13.9-14.1 μ m/m°C

Properties & Advantages:

- ▶ Optimum castability and bonding strength in PFM restorations.
- ▶ It produces a uniform oxide film at porcelain metal interface ensuring strong chemical bonding.
- ▶ High mechanical strength & stability on account of refined grain structure.
- ▶ Good burnish abilities.
- ▶ Brighter shine and finish.
- ▶ Suitable for open flame casting.



STONES



Dental Stone



Type III (Green, Yellow & Off White)

Description: Dental stone or type III gypsum for fabrication of dental models / base.

High density, low expansion Type III dental stone designed for fabrication of Dental model / base of dental model.

Packing	Product Code
Dental Stone Plaster Yellow 1 kg, 3 kg, 5 kg, 20 kg	4001/001, 4001/003, 4001/005, 4001/020
Dental Stone Plaster Green 1 kg, 3 kg, 5 kg, 20 kg	4002/001, 4002/003, 4002/005, 4002/020
Dental Stone Plaster Off White 1 kg, 3 kg, 5 kg, 20 kg	4005/001, 4005/003, 4005/005, 4005/020

Type III - Specification:

- ▶ Water/Powder: 30ml/100gm.
- ▶ Working Time: 6 minutes dry.
- ▶ Hard Set (Initial): 30 minutes.
- ▶ Wet Compressive Strength: 250 kg/cm²
- ▶ Dry Compressive Strength: 500 kg/cm²
- ▶ Mixing Time: 60 seconds.
- ▶ Setting Time: 8 to 12 minutes.
- ▶ Setting Expansion (Max): 0.08%

Plaster of Paris



Type II (Dental Grade)

Description: Dental plaster or type II gypsum, provides the optimal strength for diagnostic dental models.

Packing	Product Code
1 kg, 3 kg, 5 kg, 20 kg	4201/001, 4201/003, 4201/005, 4201/020.
15 kg bag (Slow Set)	4202/015

Fabrication of diagnostic dental models, mounting of articulators, flasking of trial dentures.

Type II - Specification:

- ▶ Water/Powder: 58-60ml / 100gm.
- ▶ Mixing Time: 15 seconds wet.
- ▶ Working Time: 3 minutes dry.
- ▶ Setting Time: 5 to 6 minutes.
- ▶ Hard Set (Initial): 30 minutes.
- ▶ Setting Expansion (Max): 0.10%
- ▶ Wet Compressive Strength: 150 kg/cm²
- ▶ Dry Compressive Strength: 300 kg/cm²
- ▶ Pre Mix Temperature: Pop and Water 25°C.



MISCELLANEOUS PRODUCTS





Angular Alcohol Lamp



Description: Angular Alcohol Lamp, also known as a spirit lamp, is a useful apparatus which is used to produce an open flame. These lamps feature high temperature flames with no odors.

Packing	Product Code
1 N (Spirit Lamp)	5505/G/001

They are very useful in a dental lab/clinic where sterilizing instruments is essential. They are commonly used in denture fabrication to melt wax or compound material. Lamp can be used upright or tilted position to various angles for applying heat in right spots.

Properties & Advantages:

- ▶ Unique hexagonal shape.
- ▶ With flame control and gas exit points.
- ▶ Lamp can be used upright or tilted position to various angles for applying heat in right spots.

Glass Beads



Description: A method used for sterilizing the working ends of endodontic files and reamers or small dental instrument tips by placing them in a container containing glass beads heated to approximately 225°C (437°F) for a defined period of time.

Packing	Product Code
Glass Beads (200 g)	5503/200

Arch Bar



Description: It is made of 316 grade SS suitable for rigid fixation. Techniques in the dentate patient begin with fixation of the occlusion. This ensures that the patients maintain their preoperative occlusal status. There are several techniques to providing mandibulomaxillary fixation (MMF). Many surgeons agree that the gold standards in MMF is the use of arch bars.

Packing	Product Code
Arch bar 12 inch long	5508/012

Intended Use/ Indications:

- ▶ For temporary fragment stabilization in emergency cases before definitive treatment.
- ▶ As a tension band in combination with rigid internal fixation.
- ▶ For long-term fixation in conservative treatment.
- ▶ For fixation of avulsed teeth and alveolar crest fractures.

Lubri Spray



Air Rotor Lubricant Oil

Description: Dental oil spray used for cleaning and lubricating all handpieces, contra angles and turbines.

Packing	Product Code
600 ml Can + Nozzle	5506/650
150 ml Can + Nozzle	5506/150

Intended Use: Lubrication and cleaning of dental handpieces to protect the precision of the Instrument. Lubri Spray is intended for internal cleaning, cleansing of old lubricant and maintenance of rotating dental and surgical instruments.

Properties & Advantages:

- ▶ Provides effective lubrication and reduces debris formation.
- ▶ Anti-Rust Agent.
- ▶ High Penetrative Ability.
- ▶ The spray is specifically designed to withstand sterilization.
- ▶ Lubri Spray lubricates and cleans the areas difficult to reach with the help of a propellant, and thereby helps in maintaining the precision of the instrument for longer duration.

Mixing Pad



Description: Maarc Mixing Pads are made of coated paper.

Dimensions: W 60mm x L 60mm & W 75mm x L 146mm.

Packing	Product Code
Mixing Pad Small (1N x 50 Sheets)	8004/001/S
Mixing Pad Big (1N x 50 Sheets)	8004/001/B

Intended Use: To be used for kneading or mixing of dental materials.

Properties & Advantages:

- ▶ High quality mixing pad.
- ▶ Easy tear-off disposable coated sheets.
- ▶ Liquid impermeable surface.
- ▶ Smooth finished surface.
- ▶ These mixing pads does not let the dental materials adhere on to their surface.



Die Hardener



Packing	Product Code
100 ml	8103/100
500 ml	8103/500
1 ltr	8103/001

- Cure, seal and smooth the gypsum surface.
- Protects the plaster.
- Best results for the production of wax-copings.
- Stain and water repellent.

Properties & Advantages:

- ▶ It produces a homogenous coating on the die stone and plaster attributed to its viscosity.
- ▶ It seals, hardens and water proofs stone and plaster.
- ▶ It protects models against abrasion specifically at marginal area which is most prone to breakage.
- ▶ The film does not disassociate from the die while building wax pattern due to heating.
- ▶ It is rapid setting and thereby reduces working time.

Die Separator / Die Lubricant



Packing	Product Code
100 ml	3003/100
500 ml	3003/500

- It is the final product that would be applied to a die prior to the formation of the wax pattern.
- It is an ideal release agent for wax, porcelain, and composite materials.

Die Spacer



Description: Die Spacer is used to provide sufficient space between the die and crown to accommodate cements used during seating.

Packing	Type	Product Code
100ml glass bottle with 10ml applicator bottle+50ml Thinner	Golden	8101/100
100ml glass bottle with 10ml applicator bottle+50ml Thinner	Silver	8102/100

Colour: Silver/Golden.

Die Spacer is a coloured, paint-on material applied to dies that adds a desired dimension to the surface of the die to function as a “spacer.”

Properties & Advantages:

- ▶ It produces a homogenous coating of 5 ml in single application on the die for crown and bridge restoration thereby assuring accurate seating of restorations.
- ▶ The film does not disassociate from the die while building wax pattern due to heating.
- ▶ It is rapid setting and thereby reduces working time.

Die Thinner



Description: Thinner to control thickness and restores Die Spacer to original consistency.

Packing	Product Code
50ml	8104/050

Intended Use: To be used as a thinning agent along with Die Spacer.

Properties & Advantages:

- ▶ Special thinner for setting preferred consistency.
- ▶ Universal thinner for all Die Spacers.



Shiva Products

ISO 13485: 2016 (TUV SUD Certified)

PROUDLY
EXPORTING TO

40⁺

COUNTRIES
WORLDWIDE





Shiva Products

ISO 13485: 2016 (TUV SUD Certified)

 **Manufactured by:**
Shiva Products

HO: 2nd Floor, Gala No. 214, Bluebell Industrial Estate, Chinchpada,
Vasai East, Vasai Virar, Palghar, Maharashtra 401208, INDIA.

 : www.maarcidental.com |  : info@shivaproducts.net |  : +91-9987637290

