

Shiva Products

ISO 13485: 2016 (TUV SUD Certified)

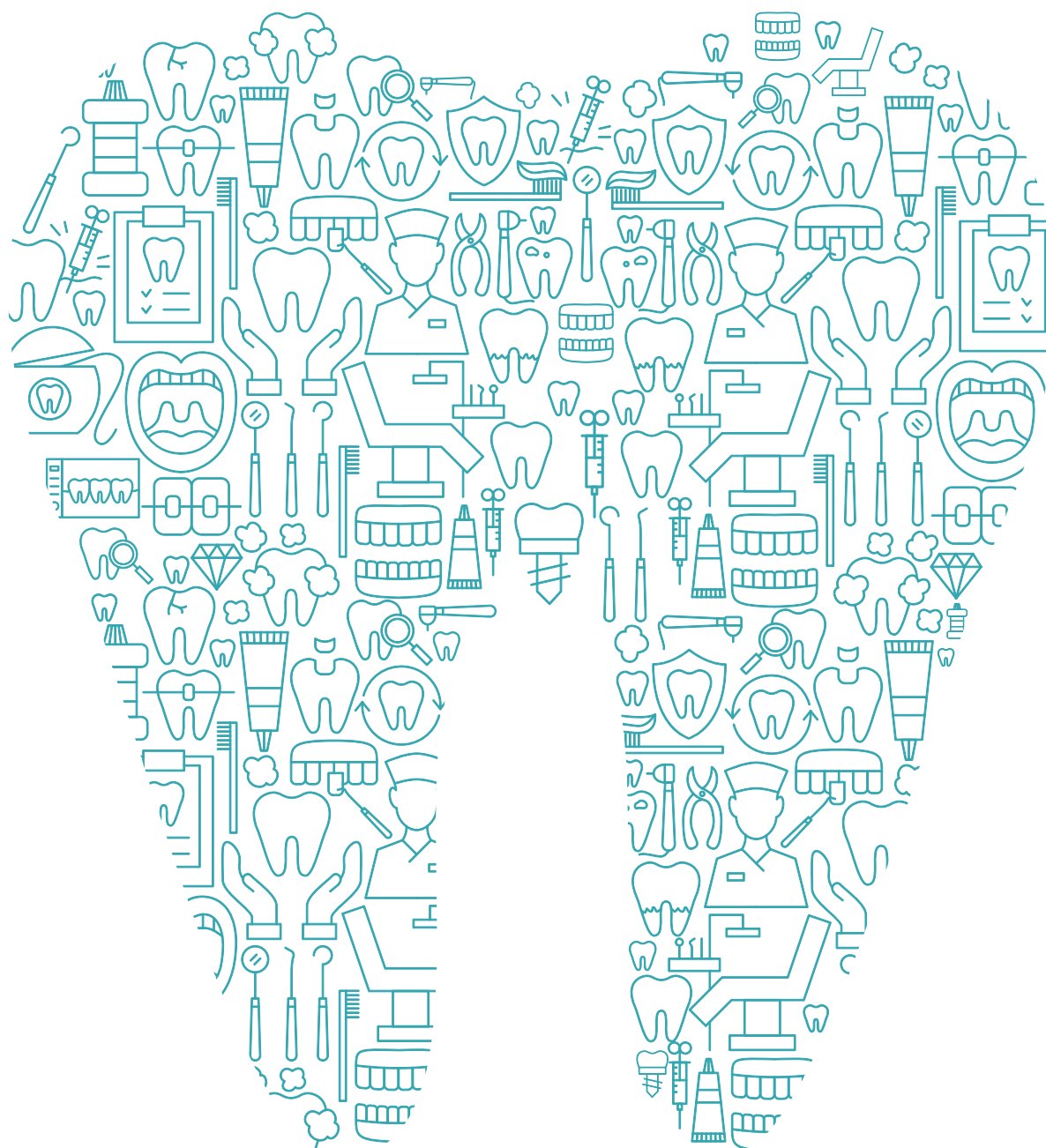
PRODUCT CATALOG

Proudly
Exporting to

70⁺

Countries
Worldwide

Experience The Refinement



INDEX

Endo. & Conservative Range

| | |
|--------------------------|----|
| D-Sens G + Gel/ Liquid | 12 |
| D-Sens P | 13 |
| Rootfyx | 14 |
| MTA | 15 |
| CeraSet MTA Putty | 15 |
| Ceraseal-B | 16 |
| Blitz White | 16 |
| Sealmax | 17 |
| Sealmax-R | 18 |
| D-Vitz | 19 |
| F-Sol | 19 |
| Endo Paste & EDTA-17 | 20 |
| Endogel-RC & Endo-L | 20 |
| Twin Kleen | 21 |
| Sodium Hypochlorite | 22 |
| Chloro-HX (2%) | 22 |
| Mercury | 22 |
| Calx, Calx-O | 23 |
| Calcium Hydroxide Powder | 23 |
| Calahyd-RC | 24 |
| Calahyd | 24 |
| T-Fill | 25 |
| Gsol | 26 |
| ETC-37 | 26 |
| Ziego | 27 |

Prosthetic Range

| | |
|-----------------------|----|
| Bite Registration Wax | 30 |
| Classic BRW | 30 |
| Perfect Bite | 30 |
| Bite Wafers | 30 |
| Bite Rims | 30 |
| Bite Blocks | 30 |

| | |
|---------------------------------------------------|----|
| Soft-Liner (Tissue Conditioner) | 31 |
| HF-Gel | 31 |
| Articulating Paper | 32 |
| Hemostaz Gel/Solution | 33 |
| Mock-Up Wax | 33 |
| Modelling Wax (Base Plate Wax) | 34 |
| Shellac Base Plates | 35 |
| Dental Special Tray | 35 |
| Impression Compound Sticks (Green Tracing Sticks) | 36 |
| Impression Compound | 36 |
| Inlay Sticks | 37 |
| Sticky Wax Sticks | 37 |
| Spacer Wax | 37 |
| Cold Cure Acrylic Resin | 38 |
| Special Tray Material | 38 |
| Heat Cure Acrylic Resin | 39 |
| Boxing Wax | 40 |
| Beading Wax | 40 |
| Cold Mould Seal | 41 |
| Die Stone (Type IV) | 41 |
| Reinforcement Mesh | 42 |
| Palate Wax | 42 |
| Casting Wax Sheets | 43 |
| Eazy Tray | 43 |
| Retention Mesh | 44 |
| Clasp Profiles | 44 |
| Grids Wax | 44 |
| Lingual Bar | 45 |
| Utility Wax | 45 |

INDEX

Orthodontic Range

| | |
|---------------------------------|----|
| Orthodontic Self-Curing Monomer | 47 |
| Orthocal Stone | 47 |
| Relief Wax | 47 |

Preventive Range

| | |
|---------------|----|
| Zirprophy | 50 |
| Pro-Paste | 50 |
| Pumice Powder | 50 |
| Find Fast | 51 |
| Plaque-D | 51 |

Waxes

| | |
|-------------------------|----|
| Inlay/Onlay Pattern Wax | 53 |
| Cad-Cam Wax Blanks | 54 |
| Sprue/Wire Wax | 54 |
| Carving Wax/Wax Blocks | 55 |
| Carding Wax/Teeth Wax | 55 |

Alloys

| | |
|------------------|----|
| Ni-Cr Alloy | 58 |
| R2 Ceramic Alloy | 59 |

Stones

| | |
|----------------------------|----|
| Dental Stone (Type III) | 61 |
| Plaster of Paris (Type II) | 61 |

Miscellaneous Products

| | |
|-----------------------------|----|
| Angular Alcohol Lamp | 64 |
| Glass Beads | 64 |
| Arch Bar | 64 |
| Lubri Spray | 65 |
| Mixing Pad | 65 |
| Die Hardener | 66 |
| Die Separator/Die Lubricant | 66 |
| Die Spacer | 67 |
| Die Thinner | 67 |

ACCREDITATIONS



ACCREDITATIONS

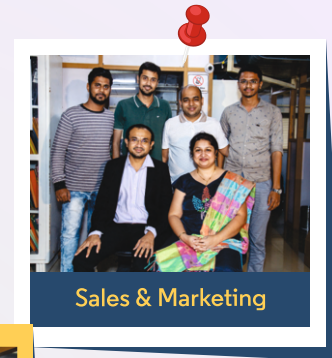
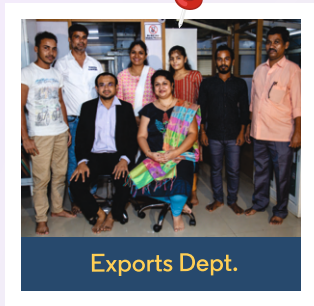


Shiva Products SQUAD

- Visions are realized under multiple eyes



Shiva Products
ISO 13485: 2016 (TUV SUD Certified)



Teamwork is the secret that makes common people achieve uncommon results.

- Ifeanyi Enoch Onuoha



ABOUT US

S : Significant

H : High-Quality

I : Innovative

V : Value your Business

A : Ace

Established in the year 1998, we are now an eminent **ISO 13485:2016** accredited company (by TUV SUD, Germany) with more than two decades of experience in the industry. We cater a wide range of products such as Dental Consumables including Endo, Prostho, Restorative, Lab range, dental alloys, jewellery waxes, etc...

We are proud to be recognized as a renowned manufacturer and exporter of premium quality Dental Consumables under the brand name "**MAARC**". Our products are specifically made according to international quality standards.

Shiva Products has become one of the leading manufacturers in Domestic and International Market. The strong relationship and the trust of our business partners and dental professionals built over two decades of operations in India has made '**MAARC**' a trusted Brand.

Shiva Products had ventured into dental market with only 2 product portfolios. With dedicated team-work and focus on our **RRR strategy (Reliable Responsible & Reasonable)**, we are proud to have more than 120 products under our brand and many new product developments underway. We are a team of experienced professionals working with a common goal of quality production, thereby, winning the trust and faith of both national and international clients.

OUR FACILITY

Shiva Products has state-of-the-art manufacturing facility in Vasai, India. Our manufacturing facility is designed as per **ISO 13485:2016** guidelines. Being one of the fastest-growing dental products manufacturing company in India, we have always invested in building modern manufacturing facility with **in-house testing laboratory** so as to maintain our harmonized international quality standards as well as to increase our production capacities and meet the growing demands of society.

OUR VISION

TO ALWAYS REMAIN THE
**MOST TRUSTED BRAND
IN DENTAL PRODUCTS**

We are led by a global vision and a drive to manufacture various dental consumables comparable to international standards so as to offer customer satisfaction.

OUR MISSION

Our mission is to manufacture the right quality products and services. It guides our direction and shape the solutions we develop today for tomorrow's dentistry. The strategy that we at Shiva Products follow to deliver right quality products & services to our clients is **RRR (Reliable-Responsible-Reasonable)**.

Reliable: We at Shiva Products follow the same principle that along with success we believe in maintaining a cordial relationship with every client. This has led us to our presence in more than 40+ countries with over a million users and we strive to expand globally.

Responsible: We take pride in the success of our products and own the responsibility in improvising & raising its standards.

Reasonable: We are always open to suggestions from our Valuable Partners and End Users. We emphasize on the enhancement of our products by constant refinement – in consultation with the experts to find more effective and efficient solutions.

ASSURED QUALITY

Shiva products is highly committed to achieving and maintaining the excellent quality of all the products. We earned the trust of our clients and consumers by remaining true to our commitments. As an **ISO 13485:2016 certified company (by TUV SUD, Germany)** we take utmost care of quality while manufacturing our goods.

With increased and continuous technology advancements in dental materials and dental products, it is our utmost responsibility to ensure the quality and reliability of our products. Each operation is carefully executed under the strict supervision of trained professionals following standardized production norms and methods, thus leaving no stone unturned in ensuring premium quality and fulfilment of needs of our customers.

*Dental care is our game,
Excellence is our goal!*



ENDO & CONSERVATIVE RANGE

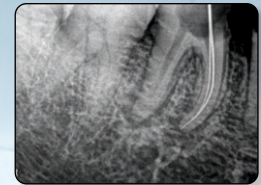
Calahyd-RC



MTA



Calx-O



Pre op before placement



After immediately placement
of Calx-O



Healing after 8 weeks

Blitz White

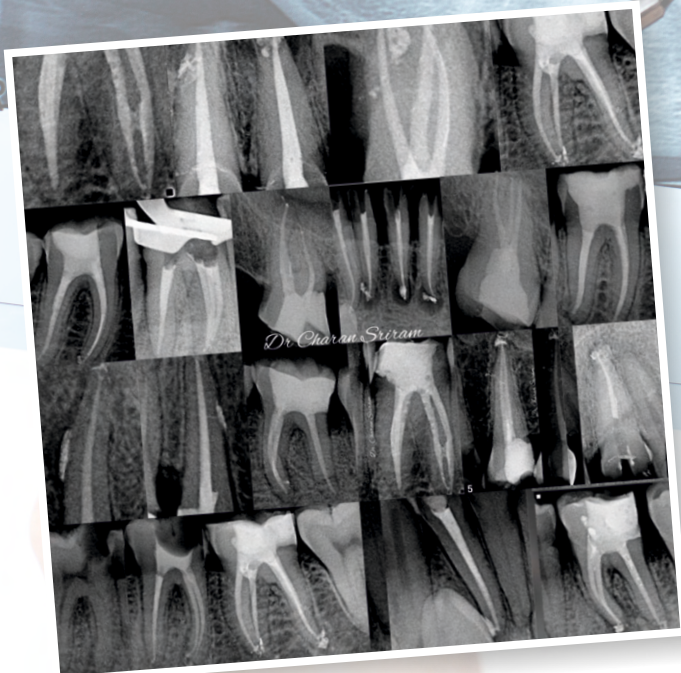
Blitz White
(In - Office Bleaching Kit)



Before

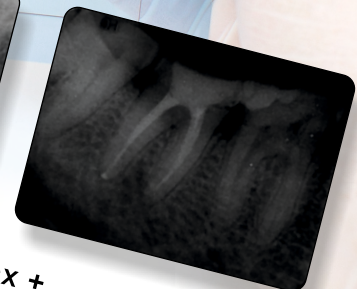
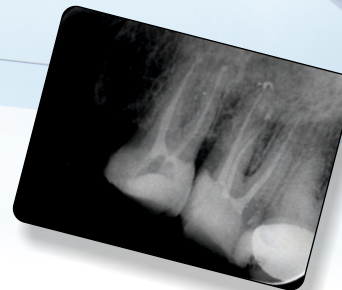


After



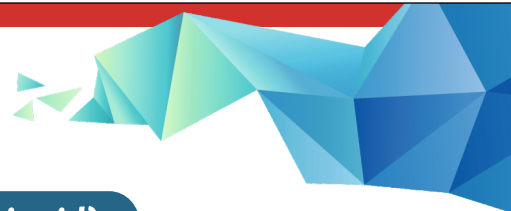
Sealmax-R

Sealmax +

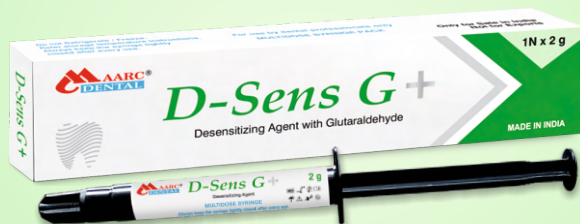




ENDO & CONSERVATIVE RANGE



D-Sens G+



Desensitizing Agent with Glutaraldehyde

D-Sens G+ (Liquid)



Desensitizing Agent with Glutaraldehyde

Description: D Sens G + is used for the treatment of hypersensitive dentine. It achieves its effects by precipitation of plasma proteins, which reduces dentinal permeability and occludes the peripheral dentinal tubes. This inhibits flow of fluid through the tubules which is the cause of sensitivity.

| Packing | Product Code |
|-------------|--------------|
| 2 g x 1 Syr | 3019/002 |
| 5 ml | 3019/L/005 |

Indications:

- ▶ To reduce or even eliminate pain in exposed cervical areas not requiring restoration.
- ▶ To alleviate or prevent dentinal sensitivity after preparation of teeth to receive fixed prosthesis or restorations.

Properties & Advantages:

- ▶ **Easy and Time saving:** One-step placement, no agitation or light curing required.
- ▶ Compatibility with all bonding and restorative materials.
- ▶ Controlled and accurate placement.
- ▶ Inhibits microbial growth by sealing dentinal tubules.
- ▶ Can be used after tooth preparation in order to reduce or relieve hypersensitivity of the dentine before using the denture or definitive restoration.

D-Sens P



Desensitizing Agent with Potassium Nitrate

Description: D-Sens P is a sustained release, 3-4% potassium nitrate and 0.11% weight by weight fluoride ion, sticky, viscous gel. D-Sens P is made to be used in a custom tray.

| Packing | Product Code |
|-------------|--------------|
| 3 g x 1 Syr | 3020/003 |

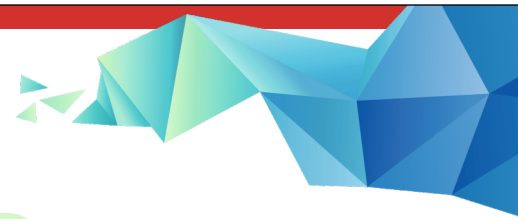
Indications: D-Sens P desensitizing gel provides a film-like varnish for sensitive teeth, sealing dentinal tubules of exposed dentin and other areas where post-operative sensitivity is a concern. The product is used either by a dental professional in the office or provided to the patient for home treatment of dentin sensitivity.

Properties & Advantages:

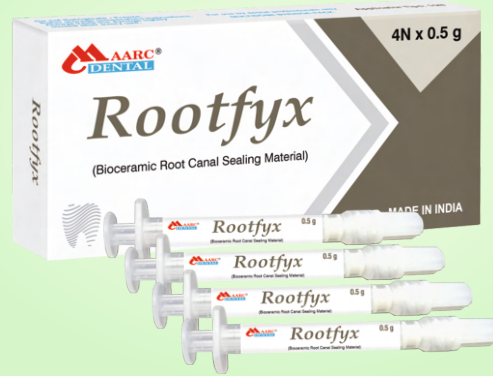
- ▶ **At home or office Desensitizer:** potassium nitrate in aqueous base makes it ideal to serve both purpose.
- ▶ **Swift Action:** Thixotropic formulation with sustain releasing properties which quickly acts on sensitivity arising due to brushing, thermal or chemical changes & whitening. It also acts in on exposed root.
- ▶ **Fluoride releases:** remineralises exposed surfaces and prevents further sensitivity.



ENDO & CONSERVATIVE RANGE



Rootfyx



Bio-Ceramic Root Canal Sealer

Description: Rootfyx (Bioceramic sealer) is used for root canal filling after the removal of infected pulp tissue in the root canal. Rootfyx is in the form of a flowable paste and can be immediately inserted into the root canal using a disposable tip. This product characteristically cures slowly by absorbing the ambient water inside the root canal. It is white and aesthetic.

| Packing | Product Code |
|---------------------------------------|--------------|
| 0.5 g x 4 Syr with 15 Applicator tips | 9107/0.5x4 |

Intended Use:

- ▶ Permanent Root Canal Sealing.
- ▶ To fill the root canal from the crown side.

Indications:

- ▶ Permanent root canal filling after vital pulp extirpation.
- ▶ Permanent root canal filling after pulp gangrene and temporary filling treatment.

Properties & Advantages:

- ▶ Excellent biocompatibility and good adherence to dentin.
- ▶ Good miscibility in water.
- ▶ Radiopaque.

MTA



Root Repair Material

CeraSet MTA Putty



Non-Staining Bioceramic for Root & Pulp Treatment

Description: Maarc MTA is a powder & liquid system consisting of tricalcium and dicalcium silicate. Maarc MTA is white in color and does not stain the tooth. The powder is fine grained which makes it ideal to be used as a sealer / in putty consistency as desired. The pH of the mix is higher than 10.5 which makes it the best material for root repair.

Maarc CeraSet MTA Putty comes in paste consistency & made using pure mineral technology so its white in colour and will not stain operated teeth. CeraSet MTA Putty is fine grained tricalcium and dicalcium silicate. The paste is designed to set in vivo in the presence of moisture provided by the surrounding tissues. The pH of the paste is higher than 10.5 which makes it the best material for root repair.

| Packing | Product Code |
|-----------------------------------------------|--------------|
| MTA: 1 g powder, 5 ml liquid, measuring scoop | 8601/001 |
| MTA: 180mg + 2ml (Unidose Kit) | 8601/002 |
| CeraSet MTA Putty: 0.7 g x 1 Syr | 9971/0.7 |

Intended Use: Root and Pulp treatment material

Indications:

- ▶ Indirect pulp capping
- ▶ Pulpotomy
- ▶ Root-end filling
- ▶ Direct pulp capping / partial pulpotomy
- ▶ Apexogenesis & Apexification
- ▶ Sealing
- ▶ Cavity liner / base
- ▶ Perforation repair
- ▶ Obturation

Properties & Advantages (MTA):

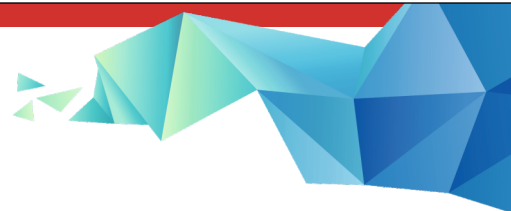
- ▶ Excellent Handling Properties.
- ▶ Fast Setting.
- ▶ Pure Mineral Tech: No Discoloration.
- ▶ Promotes mineralization of tissue.
- ▶ High Strength makes it suitable as base restoration material.
- ▶ Fine Grain.
- ▶ High pH.
- ▶ Biocompatible.
- ▶ Good radiopacity.

Properties & Advantages (CeraSet MTA Putty):

- ▶ Non-staining and resin free.
- ▶ Perfect consistency with no mixing.
- ▶ High pH with beneficial ion release.
- ▶ Highest radiopacity in its class of MTA.
- ▶ Zero waste syringe with positive displacement plunger tip.
- ▶ MTA-based bioactivity promotes the formation of hydroxyapatite.
- ▶ Dimensionally stable with zero shrinkage and immediately wash-out resistant after placement.



ENDO & CONSERVATIVE RANGE



CeraSeal-B



Bio Ceramic Sealer

Description: MAARC CeraSeal-B is MTA based Bio-ceramic Root Canal Sealer.

| Packing | Product Code |
|------------------------------------------|--------------|
| 1 g powder, 5 ml liquid, measuring scoop | 8501/001 |

Intended Use: Sealing of root canals of teeth during endodontic treatment.

Indications: Permanent obturation of root canal of teeth with obturation point.

Properties & Advantages:

- ▶ It is resin and monomer free and ensures zero shrinkage and biocompatibility.
- ▶ When mixed, produces mixture with desired flow and adhesion.
- ▶ Its high pH and Bioactive properties help remineralization due to hydroxy-apatite formation.
- ▶ It has good radiopacity & due to its purity it will not stain teeth.

Blitz White



In-office Tooth Whitening kit

Description: It is 35% hydrogen peroxide based in-office tooth whitening system requiring minimal chair time. It contains desensitizers to maximize patient comfort.

| Packing | Product Code |
|-------------------------------------------------------------------------------------------------------------|--------------|
| 2 x 0.4 g Powder + 2 x 3 ml Liquid + 1 x 3 g Gingiva Shield + 2 x Micro Brushes + 2 x Dispensing Tips | 8801/001 |

Indications:

- ▶ Lightly etching away surface staining on vital and non-vital teeth.
- ▶ Assisting in the brightening of discoloured teeth.
- ▶ Removal of surface stains on teeth discoloured by
 - Medications, such as tetracycline, minocycline.
 - Fluorosis.
 - Food related stains.

Properties & Advantages:

- ▶ In-office system with De-sensitizing agent.
- ▶ Less post procedural sensitivity.
- ▶ Quicker Whitening Result.
- ▶ Contains Fluoride for Re-mineralization.

Sealmax +



Root Canal Sealer with MTA

Description: Sealmax+ is a MTA based Bioceramic root canal sealing material supplied in the form of powder and resin. The powder and resin are mixed to produce a root canal sealing material of excellent sealing capacity and tissue compatibility. As a result of its close adaptation to the walls and hydrophobic nature, Sealmax + allows tight sealing of root canal during obturation.

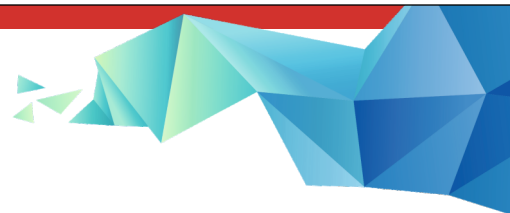
| Packing | Product Code |
|---------------------------------------------|--------------|
| 3 g powder, 5ml liquid and dispensing scoop | 8011/001 |

Intended Use: Sealing of root canals during obturation in the secondary dentition with or without the aid of obturation points (gutta-percha).

Indications: Permanent obturation of root canal of teeth with obturation point.

Properties & Advantages:

- ▶ **Filled with Bio-ceramics (MTA):** Contains more than 20% of bio-ceramic material.
- ▶ **No moisture required for setting:** Activators in powders makes resin set.
- ▶ **Calcium hydroxide release on surface when encounters moisture:** Bio-ceramic fillers on surface when exposed to moisture releases ions and this raises pH of exposed surface, this also helps in inhibiting bacterial growth.
- ▶ **Favours bone formation:** Ion release enhances bone formation.
- ▶ **Eugenol free:** No long term post operative pain reported till date.
- ▶ Grain free.
- ▶ Ideal handling properties.
- ▶ Excellent radiopacity.



Sealmax -R



Resin based root canal sealer

Description: Sealmax-R is a resin based root canal sealing material supplied in the form of powder and liquid. The powder and liquid are mixed to produce a root canal sealing material of excellent sealing capacity and tissue compatibility. As a result of its close adaptation to the walls and hydrophobic nature, Sealmax-R allows tight sealing of root canal during obturation.

| Packing | Product Code |
|-----------------------------------------------------------|--------------|
| 10 g powder, 10 ml liquid, measuring scoop and mixing pad | 8001/001 |

Intended Use: Sealing of root canals during obturation in the secondary dentition with or without the aid of obturation points (gutta-percha).

Indication: To seal the root canals of teeth.

Properties & Advantages:

- ▶ Eugenol free.
- ▶ Insoluble in water and non-degradable.
- ▶ Grain free.
- ▶ Hydrophobic.
- ▶ Tissue tolerant, most ideal viscosity.
- ▶ Negligible shrinkage.
- ▶ Complete impervious seal.
- ▶ Excellent adhesion.
- ▶ Best intracanal sealing.
- ▶ Excellent radiopacity.

D-Vitz



Pulp Devitalizing Paste

Description: It is a pulp devitalizing paste which provides powerful pulp devitalizing properties because of paraformaldehyde & lidocaine. It is Arsenic free paste.

| Packing | Product Code |
|---------------------------------|--------------|
| 3 g syringe + 5 Applicator tips | 9003/003 |

Indications: Used for Devitalization of the pulp.

Properties & Advantages:

- ▶ D-vitz should be used when a preparation for pulp devitalization is advisable and when an arsenic-free preparation is preferred. The active ingredient is Paraformaldehyde, a coagulant which acts on albumin and confers the required fibrous consistency to the pulp to facilitate its subsequent extirpation.
- ▶ Fast acting & pain relieving paste.
- ▶ Easy to Apply.
- ▶ Controlled Flow.

F-Sol



Formocresol Solution

Description: It is used for vital pulpotomy of primary teeth & as a temporary intracanal medicament during the root canal therapy. It is a dental pulp mummification material that is used to fasten the alive pulps.

| Packing | Product Code |
|---------|--------------|
| 15 ml | 3012/015 |

Indications: Indicated as a disinfectant and devitalizing solution used as part of endodontic treatment.



ENDO & CONSERVATIVE RANGE



Endo Paste



17% EDTA with Carbamide Peroxide Paste

EDTA-17



17% EDTA with Carbamide Peroxide Paste

Endogel-RC



17% EDTA Gel

Endo-L



17% EDTA Liquid

Description:

Endopaste and **EDTA - 17** is a ready-to-use Ethylene Diamine Tetracetic Acid (EDTA) and carbamide peroxide paste, packed in Multi-dose, Plastic dispensing syringe. It is both lubricating and chelating material in paste form, to be used during cleaning and shaping of the root canals during endodontic treatment.

Endogel-RC is in gel form and **Endo-L** is in liquid form, they are ready to use water-soluble Ethylene Diamine Tetracetic Acid (17% EDTA) for root canal cleaning. They are both lubricating and chelating material. They are non sterile devices & does not require sterilization while being used. Endo-L is a smear layer remover.

| Packing | Product Code |
|-------------------------------------------------------------------|--------------|
| Endo Paste: 3 g x 1 Syr + 3 Applicator tips | 9203/003 |
| EDTA-17: 3 g x 1 Syr + 3 Applicator tips (only for sale in India) | 9251/003 |
| Endogel-RC: 3 g x 1 syr + 3 Applicator tips | 9202/003 |
| Endo-L: 15ml Bottle Refill | 9201/015 |
| Endo-L: 100ml Bottle Refill | 9201/100 |

Indications:

- ▶ For use as root canal lubricant during mechanical instrumentation in endodontic treatment of teeth.
- ▶ For use as chelating agent during cleaning and shaping of canals in endodontic treatment of teeth.
- ▶ For use as a root canal conditioner during chemico-mechanical preparation of root canal and shaping the canal, aiding in the softening of the calcifications and removal of debris from the prepared tooth.

Properties & Advantages:

- ▶ Effective chelating.
- ▶ Lubrication.
- ▶ Deburring water-soluble material.
- ▶ 17% Liquid based EDTA.
- ▶ Used to flush out the debris from canal.
- ▶ Removes the smear layer from dentinal walls.
- ▶ It facilitates root canal preparation.
- ▶ Also helps in removal of calcium hydroxide oil based from the canals.
- ▶ Mechanically activated using an endo brush.

Twin Kleen



Single step – Chelation and Irrigation

Description: Twin Kleen is a mild chelating agent HEBP with short term compatibility with sodium hypochlorite. The combination eliminates the debris impaction in the anatomical irregularities. The combination also reduces the AHTD (Accumulated Hard Tissue Debris) and prevents smear layer formation during rotary instrumentation. By mixing Twin Kleen with sodium hypochlorite, one can avoid the irrigation sequence and the combination can be used as one irrigating solution. The combination can be used during instrumentation and as a final rinse solution. Use with Maarc Sodium Hypo 3% or 5% to get best results (3% Preferred).

| Packing | Product Code |
|--------------|--------------|
| 100 Capsules | 3014/100 |
| 50 Capsules | 3014/050 |
| 25 Capsules | 3014/025 |

Intended Use: One-step root canal irrigation system.

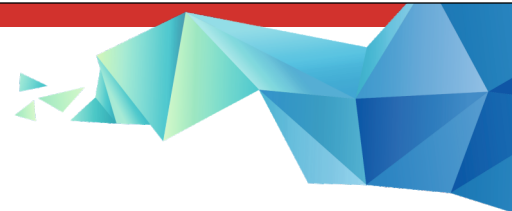
Indications: Irrigation of root canal during endodontic therapy to remove the debris and smear layer alongside softening of the dentinal surface aiding in easy instrumentation and as a final rinse solutions.

Properties & Advantages:

- ▶ Mild Chelating Agent.
- ▶ Proteolytic Agent.
- ▶ Lubricating Agent.
- ▶ Prevents smear layer.



ENDO & CONSERVATIVE RANGE



Sodium Hypochlorite



Sodium Hypochlorite

Description: 3 % & 5% Sodium Hypochlorite solution, aids in easy debridement of both hard and soft tissue debris from the root canals. Prevents clogging of the canals with debris.

| Packing | Product Code |
|----------------------------|------------------------------|
| 250 ml, 500 ml, 5 ltr (3%) | 3009/250, 3009/500, 3009/005 |
| 250 ml, 500 ml, 5 ltr (5%) | 3004/250, 3004/500, 3004/005 |

Indications:

- Irrigation of root canals during endodontic treatment.

Properties & Advantages:

- Ready to use solution, specially formulated for use in endodontics.
- Buffered and stabilized formulation, that maintains the solution properties throughout its shelf life.
- Facilitates reaming through dissolution of the organic content of the root canal system.

Chloro-HX (2%)



2% Chlorhexidine Solution

Description: 2% Chlorhexidine Solution that is used to clean & disinfect before many dental procedures. This greatly reduces the potential for post-operative sensitivity caused by residual Bacteria.

| Packing | Product Code |
|---------|--------------|
| 100 ml | 3010/100 |
| 500 ml | 3010/500 |

Mercury



Mercury

Intended Use: Used as a dental amalgam after mixing it with powdered alloy.

| Packing | Product Code |
|---------|--------------|
| 30 g | 3001/030 |
| 225 g | 3001/225 |

Properties & Advantages:

- 99.99% pure.
- An especially triple distilled, chemically pure mercury.
- Recommended for preparing superior dental amalgam in combination with either of the Alloys in powder form.

Calx



Temporary Root Canal Filling Material

Description: It is a water based white paste consisting of premixed Calcium Hydroxide and Barium Sulphate. Supplied in a multi dose syringe with disposable pre-bent cannulas for dispensing.

| Packing | Product Code |
|----------------------------------------------|--------------|
| Calx: 3 g x 1 Syr + 3 Applicator Tips | 9101/003 |
| Calx-O: 1.5 g x 2 Syr with 4 Applicator tips | 9102/1.5 x 2 |
| Calx-O: 3 g x 1 Syr + 3 Applicator Tips | 9102/003 |

Intended Use: To be used as a root canal dressing and filling material during endodontic treatment of teeth and as a temporary filling material for pulp capping and pulpotomies.

Calx-O



Temporary Root Canal Filling Material

Properties & Advantages:

- ▶ Non setting paste water-based paste.
- ▶ Easy handling and easy direct application at the intended site.
- ▶ Ideal for temporary filling of root canal and during pulpectomy.
- ▶ Excellent radiopacity.
- ▶ Premixed, ready to use paste.
- ▶ Syringe type for easy delivery of the paste directly into the canal.

Calcium Hydroxide Powder



Temporary Root Canal Filling Material

Description: Calcium hydroxide is a multi-purpose dental material, when mixed with DM water/Saline water, it achieves paste consistency. It provides the induction effect for hard tissue induction and deposition.

| Packing | Product Code |
|---------|--------------|
| 15g | 5002/015B |

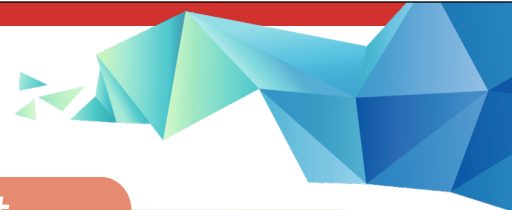
Intended Use: To be used as a root canal dressing and filling material during endodontic treatment of teeth and as a temporary filling material for pulp capping and pulpotomies.

Properties & Advantages:

- ▶ Easy handling and easy direct application at the intended site.
- ▶ Ideal for pulp capping / pulpotomy, as the consistency of the Calcium Hydroxide paste can be prepared as desired.



ENDO & CONSERVATIVE RANGE



Calahyd-RC



Calcium Hydroxide Paste (With Iodoform)

Calahyd +



Calcium Hydroxide Paste (With Iodoform)

Description: Calahyd – RC is a silicon oil based yellowish paste consisting of premixed Calcium Hydroxide and Iodoform. Supplied in a multi dose syringe with disposable pre-bent cannulas for dispensing. Used to prevent bacterial contamination of the canal, as the two ingredients improve the induction effect for hard tissue induction and deposition.

| Packing | Product Code |
|-----------------------------------|--------------|
| 1.5 g x 2 Syr + 4 Applicator tips | 9103/15X2 |
| 1.5 g x 2 Syr + 4 Applicator tips | 9151/15X2 |

Intended Use:

- ▶ To be used as a root canal dressing and filling material during endodontic treatment of secondary teeth and as a long-term root canal filling/sealing material after pulpectomy/root canal treatment in deciduous teeth.

Indications:

- ▶ For pulp capping and pulpotomy.
- ▶ Apexifications and hard tissue formation.
- ▶ Temporary sealing material for infected root canals.

Properties & Advantages:

- ▶ Non setting paste with oil base.
- ▶ Easy handling and easy direct application at the intended site.
- ▶ Ideal for infected root canal and pulpectomy in deciduous teeth.
- ▶ Disposable tips for prevention of cross-contamination.
- ▶ Premixed, ready to use paste.
- ▶ Syringe type for easy delivery of the paste directly into the canal.

T-Fill



Temporary Non-Eugenol Cement (Temporary Filling Material)

Description: T-Fill is a ready to use temporary filling material (Type II- Temporary Cement for bases and temporary restoration) in paste form, self-curing under humidity, to be used for temporary filling of cavities during restorative or endodontic treatment of teeth.

| Packing | Product Code |
|------------------------------------------------------|--------------------------|
| 30 g White (Bubblegum Flavor) (only for bulk orders) | 5507/BG/030 |
| 40 g, 30 g White (Mint Flavor) | 5507/040, 5507/030 |
| 40 g, 30 g Pink (Mint Flavor) | 5507/P/040, 5507/P/030 |
| 40 g, 30 g Pink (Strawberry Flavor) | 5507/S/040, 5507/S/030 |
| 40 g, 30 g Pink (Rose Flavor) | 5507/R/040, 5507/R/030 |
| 40 g, 30 g Mint Green (Green Apple Flavor) | 5507/GA/040, 5507/GA/030 |

Intended Use:

- Temporary filling of teeth

Indication:

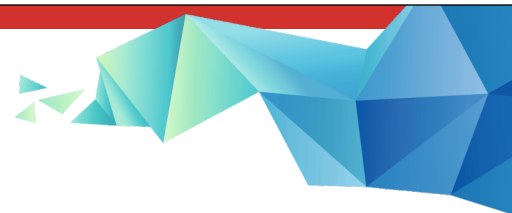
- Temporary filling material during endodontic and restorative treatment of teeth.

Properties & Advantages:

- Eugenol-Free with non-irritating properties.
- Higher adhesion to teeth structure.
- Micronized and homogeneously mixed for grain free consistency.
- Quick setting in moist conditions.
- There is minor but even expansion on setting so no cracks develop, giving best sealing, hence protecting the pulp.



ENDO & CONSERVATIVE RANGE



Gsol



Gutta Percha Solvent

| Packing | Product Code |
|---------|--------------|
| 15 ml | 3006/015 |

Intended Use: Gsol is intended for use during repeated root canal treatments to remove gutta-percha cones from the root canal.

Indication: Removal of the gutta-percha during re-root canal treatment of teeth.

Properties & Advantages:

- ▶ It is an orange oil (D-limonene) based Gutta Percha Solvent used for removing gutta percha at the time of Re-root canal treatment.
- ▶ Fast dissolving of G.P. points.
- ▶ Built on natural constituents - doesn't cause irritation to mucosa & periapical tissue.

ETC-37



Etching Materials (37% Phosphoric Acid)

Description: ETC-37 is a specially formulated surface etching materials which can be used for preparing the tooth enamel and dentin to receive bonded restorations. Supplied in the form of a thixotropic gel/liquid it provides excellent control over the flow of the etchant. The device allows easy manipulation by the dentist and etch the surface to precise extent. It can also be used to etch the surfaces of enamel prior to restorations with resin based restorative materials.

| Packing | Product Code |
|-------------------------------------------------|--------------|
| 3 g x 1 Syr + 3 Applicator tips | 9401/003 |
| 25 g x 1 Syr + 10 Applicator tips + 1 Connector | 9401/025 |
| 5 g x 3 Syr + 10 Applicator tips | 9401/5x3 |
| 15 ml x 1 liquid bottle refill | 9402/015 |

Intended Use:

- ▶ Etching of the surfaces of teeth which are to receive resin based/ bonded restorations.
- ▶ Etching of the prepared access cavity in endodontically treated teeth to receive bonded restorations.
- ▶ Etching of both enamel and dentinal surfaces of teeth prior to resin based restorations.
- ▶ Etching of the surfaces of teeth for bonding of brackets in orthodontic treatment of teeth.

Ziego



Zinc Oxide + Eugenol Kit

Zinc Oxide



Eugenol



Eugenol Based
Temporary Filling Material

Description: ZIEGO (Zinc oxide + Eugenol) is a temporary filling material (Type II Temporary Cement for bases and temporary restoration) supplied in powder and liquid form, which sets by an acid-base reaction by formation of zinc eugenolate chelate once the powder and liquid are mixed in the recommended proportion. The reaction is catalyzed by water and is accelerated by the presence of metal salts.

| Packing | Product Code |
|----------------------------------------|------------------------------|
| 30 g Powder + 15 ml Liquid (Ziego) | 8701/001 |
| 30 g, 100 g, 500 g (Zinc Oxide Powder) | 5001/030, 5001/100, 5001/500 |
| 15 ml, 30 ml, 110 ml (Eugenol) | 3002/015, 3002/030, 3002/110 |

Intended Use: Temporary filling of teeth during restorative / endodontic treatment of teeth.

Indication: Temporary obturation / restoration / filling of teeth.

Properties & Advantages:

- ▶ Easy handling and easy direct application at the intended site.
- ▶ Ideal for temporary filling of teeth.
- ▶ The cement is non-irritating, and creates a perfect closure of the cavity.
- ▶ Maintains a good coronal seal of the cavity, preventing contamination.

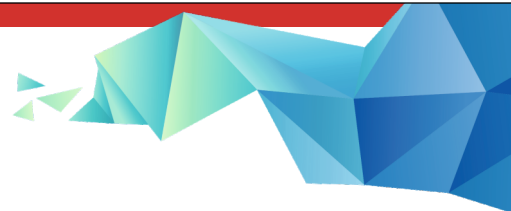


PROSTHO RANGE





PROSTHO RANGE



Bite Registration Wax



Bite Registration Wax

Thickness: 1.8 to 2.2 mm

Size: 160 mm x 85 mm

Description: BRW/Classic BRW/Perfect Bite is a type of impression wax with/ aluminum fillers used in direct technique to record the patient's upper and lower teeth in the bite position to assist in the making and fitting of dental prosthesis and indirect restorations.

| Packing | Product Code |
|------------------------------------------|--------------|
| Bite Registration Wax (Aluminum Filled) | 2202/010 |
| Classic BRW Extra Hard (Aluminum Filled) | 2207/010 |
| Perfect Bite (Zero Tolerance) | 2213/010 |
| Bite Wafers | 2210/010 |

Intended Use: For registering bite of patient for prosthetic application.

Properties & Advantages:

- ▶ The wax sheets are dimensionally more stable and tough, as compared to the modelling wax base plate wax and does not distort easily due to external factors.
- ▶ The impression of the bite is more refined when recorded using BRW, due to softening of the wax evenly by the aluminum filler particles which disperse the heat.
- ▶ The shrinkage after cooling is negligible due to crystallization of wax around the resin & aluminum particles.

Bite Rims



Description: Bite Rims are occluding surfaces built on temporary or permanent denture bases for the purpose of making maxillomandibular relation records and for arranging teeth.

| Packing | Product Code |
|---------|--------------|
| 10 N | 2214/010 |

Bite Blocks



Description: Pre-fabricated bite blocks for time-saving fabrication of precise bite moulds. U-shape, pliable & easy to place in working areas.

| Packing | Product Code |
|---------|--------------|
| 10 N | 2311/010 |

Soft-Liner



Soft Denture Reline Material /
Tissue conditioner

Description: Soft denture reline material / Tissue conditioner

| Packing | Product Code |
|---------------------------------------------------------|--------------|
| 50 g Powder + 25ml x 2 Liquid + Dropper + Measuring Cup | 8005/001 |

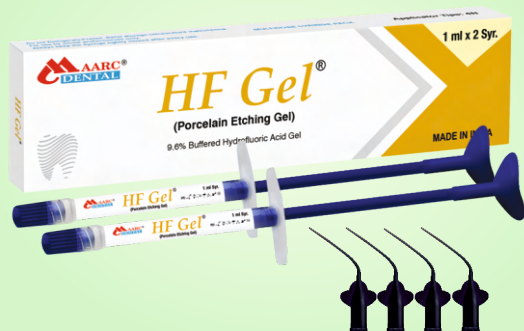
Intended Use:

- For the temporary re-basing (relining) of acrylic dentures.
- Conditioning tissue.

Properties & Advantages:

- Comfortable tissue conditioning.
- Absorbs shock efficiently.
- Enhances denture stability.
- Excellent denture adhesion.

HF Gel



9.6% Porcelain Etching Gel

Description: HF Gel is a porcelain etchant containing 9.6% buffered hydrofluoric acid in gel form that must be handled with extreme care (as per IFU). HF Gel has been buffered, gelled and packaged to minimize problems, provided that it is used in accordance given instruction in the package. Porcelain etchant improves the mechanical bond between porcelain and adhesive/cement by increasing the surface area of the porcelain. The effect is similar to sandblasting but is more controlled and effective.

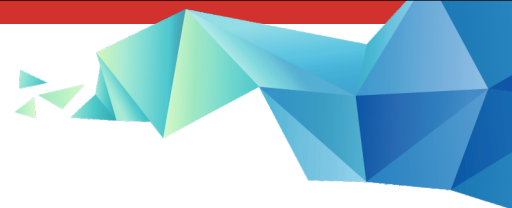
| Packing | Product Code |
|----------------------------------|--------------|
| 1 ml x 2 syr + 4 applicator tips | 9801/1x2 |

Intended Use:

- Cementation of porcelain restorations.
- Repair of porcelain restorations.
- Etching porcelain crown surface for orthodontic treatment.

Properties & Advantages:

- 9.6% buffered hydrofluoric acid gel.
- Better stability.
- Fast porcelain etching.
- Controlled flow.
- Precise placement.
- Selective etching.
- High visibility.



Articulating Paper



Articulating Paper

Description: MAARC articulating paper are coated with easy transfer ink so it accurately highlights occlusal contacts.

Product Color: Red / Blue.

| Packing | Economy Pack |
|------------------------------------------------------------|--------------|
| 40 mic - Red – 1 Box containing 10 books | 5515/001/E |
| 40 mic - Blue – 1 Box containing 10 books | 5519/001/E |
| 40 mic - Red / Blue – 1 Box containing 10 books | 5511/001/E |
| 70mic - Red – 1 Box containing 10 books | 5529/001/E |
| 70mic - Blue – 1 Box containing 10 books | 5531/001/E |
| 70mic - Red / Blue – 1 Box containing 10 books | 5527/001/E |
| 100 mic - Red – 1 Box containing 10 books | 5517/001/E |
| 100 mic - Blue – 1 Box containing 10 books | 5521/001/E |
| 100 mic - Red / Blue – 1 Box containing 10 books | 5513/001/E |
| 40 mic - Red / Blue – 1 Box containing 6 books (Horseshoe) | 5523/006/E |
| 70 mic - Red / Blue – 1 Box containing 6 books (Horseshoe) | 5533/001/E |

Intended Use: Used as diagnostic device in dentistry to highlight occlusal contacts and the distribution of occlusal forces.

Properties & Advantages:

- ▶ It comes in various thickness.
- ▶ Maarc articulating paper comes with progressive color transfer and aids in visualizing static occlusion.
- ▶ Because of its low thickness and flexibility, it adapts perfectly to cusps and fossae, making it extremely precise and therefore suitable for more delicate preparations.

Hemostaz Gel / Solution



Hemostatic Gel & Solution with
25% Aluminum Chloride

Description: Hemostaz Gel/Solution causes profound hemostasis – controls bleeding by contracting the tissues to seal the injured blood vessels. Thereby arresting the bleeding within few seconds of application & reducing the chair side time for moisture control. It controls moisture from the crevicular seepage by absorption of the crevicular fluid and momentary shrinking the epithelial tissue. Eliminating sulcular fluid contamination during restorative treatment allowing for optimal bonding of the adhesives & liners. It physically displaces the tissues for superb marginal access with minimal pressure and no danger of rupturing epithelial attachment, providing unsurpassed kindness to hard and soft tissues. Hemostaz Gel/Solution requires much less time and force than using a gingival retraction cord. It decreases the need of repeat impressions by aiding in precise recording of the finish lines and margins.

| Packing | Product Code |
|---------|--------------|
| 15 ml | 3016/015 |
| 3 gm | 3018/003 |

Indications:

- ▶ Hemostaz Gel/Solution is a topical hemostatic agent that can be used to control bleeding in the gingival sulcular space there by preventing contamination during direct bonding procedures.
- ▶ Hemostaz Gel/Solution can also be used for moisture control during proximal restorative treatment; as a hemostatic agent during gingivectomy and gingivoplasty, and to control bleeding from hyper active pulp tissue or pulp polyps during pulpotomy.
- ▶ Hemostaz Gel/Solution is best suited to arrest surface capillary bleeding during various dental procedures where moisture control is needed, including fixed prosthodontic treatment, restorative-operative treatments, periodontal treatment, etc.

Mock-Up Wax



Description: Mock up/Wax up is a production of wax models in the laboratory based on the impression of the existing situation in your mouth. It allows the alignment of patients' wishes and real possibilities for developing a prosthetic replacement.

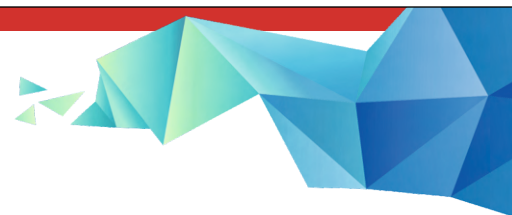
Packing: Each Packet of 'MAARC' Mockup Wax contains 12 sheets wrapped in non-adhesive silicone paper to facilitate easy removal.

Color: White **Thickness:** 1.3 mm – 1.5 mm **Size:** 160mm X 90 mm

| Packing | Product Code |
|-----------------|--------------|
| 12 N | 2201/225 |
| 200 g (Regular) | 2201/200 |

Properties & Advantages:

- ▶ It simulates the final outcome. The result is temporary and can be changed according to the patient's desire.
- ▶ It can be repeated as many times as needed in order to select the best possible solution.
- ▶ It helps create trust between the patient and the dentist.
- ▶ It allows the dentist to evaluate the patient's desires and change the treatment plan accordingly.



Modelling Wax



Base Plate Wax

Description: It is a type 2 low-fusing wax used for indirect wax technique. It is made of low-molecular-weight esters of fatty acids derived from natural or synthetic components, such as petroleum derivatives, that soften at a relatively low temperature (45-55°C).

Colour: It comes in various shades such as pink, light pink, red.

Type: Soft, Medium, Hard & Extra-hard.

Intended Use: Fabrication of occlusal rims, spacer to protect the relief areas and to establish the initial arch form in the construction of complete dentures, fabrication of trial denture base in the process of making complete or partial dental prosthesis, production of gypsum casts, non metallic denture bases, registering of jaw relations, and laboratory work.

| Product Type | Packing | Product Code |
|----------------------------------------------------------------|--------------------|------------------------------------------------------------------|
| Modelling Wax Regular | 12 N, 200 g, 500 g | 2001/012, 2001/200, 2001/500 |
| Modelling Wax Red | 12 N, 200 g, 500 g | 2002/012, 2002/200, 2002/500 |
| Modelling Wax Type 1 Pink, Light Pink & Transparent | 12 N, 500 g | 2003/012, 2003/500, 2004/012, 2004/500, 2005/012, 2005/500 |
| Modelling Wax Type 2 (Medium Hard) Light Pink & Transparent | 12 N, 500 g | 2006/012, 2006/500, 2008/012, 2008/500 |
| Modelling Wax Flexi | 12 N, 500 g | 2007/012, 2007/500 |
| Modelling Wax Type 3 (Hard) Pink, Light Pink & Transparent | 12 N, 500 g | 2010/012, 2010/500, 2009/012, 2009/500, 2011/012, 2011/500 |
| Modelling Wax Type 5 Pink | 12 N, 500 g | 2012/012, 2012/500 |
| Modelling Wax Type 2 Pink - 2 | 500 g | 2013/500 |
| Modelling Wax Type-6 (Plasti Wax) | 12 N | 2015/012 |

Properties & Advantages:

- ▶ The wax does not fragment into flakes when molded after softening, and provides a framework for registering of jaw relations and arrangement of the prosthetic teeth.
- ▶ The wax attains a plastic state at room temperature, hence during the trials the teeth do not get displaced from their defined layout as per the patient's jaw model under the ideal working pressure of try in models.
- ▶ The wax melts out during the process of burnout/ dewaxing to create the mold space into which the acrylic is filled for making the final denture prosthesis.

Shellac Base Plates



Intended Use: Fabrication of trial denture base and custom impression tray during prosthetic rehabilitation in edentulous patients.

Type: It comes in different formulations for different climatic conditions (LMP / HMP / Tropical / Al. Filled).

Colour: Brown /Yellow/ Pink / Aluminum.

Description: Shellac base plate contains shellac which is a natural resin having low fusing properties and fillers for brittleness making it ideal for fabrication of trial denture base during making of Acrylic / Flexible dentures.

Thickness: Upper / Lower Base Plate: 1.3mm, 1.7mm, 2.0mm, 2.5mm and 3.0mm (+/- 0.15mm)

Packing: Each Packet of 'MAARC' Base Plate contains 8 upper and 4 lower plates, 12 Pcs, 50 Pcs and 100 Pcs.

| Packing* | Product Code |
|----------------------------------|--------------|
| Tropical type - Brown/Pink | 1001 to 1024 |
| LMP Type - Pink | 1101 to 1109 |
| HMP Type - Pink | 1201 to 1210 |
| Al. Filled - Silvery Grey | 1301 to 1310 |
| Tropical Green & Tropical Yellow | 1023 & 1024 |

* Refer website for complete re-order numbers.

Properties & Advantages:

- ▶ Low fusing natural resin. Dimensionally stable at working room temperature.
- ▶ They are ready to use maxillary & mandibular plates – 8 upper & 4 lower.
- ▶ Optimum heat resistance to minimize overheating of the plate.
- ▶ Easily adaptable on heating and easy to work with.
- ▶ Retain the shape stability and do not warp back on cooling.
- ▶ Optimum mechanical strength to resist breaking during try-in denture.
- ▶ Does not adhere to plaster.

Dental Special Tray



Description: An efficient special tray system for use with all impression materials.

Thickness: 2.2mm (+/- 0.15mm) aluminum filled – to get even impression

| Packing | Product Code |
|---------|--------------|
| 10 N | 1309/010 |

Indications: Fabrication of custom tray for impression making.

Properties & Advantages:

- ▶ Time saving and economical as compared to light cure and cold cure tray.
- ▶ No toxic gases as in cold cure.
- ▶ STP is low fusing thermo-plastic compound with high flow. So does not melt wax spacer and flows through stoppers.
- ▶ It has heat conducting properties, so no worries when applying hot border moulding compound. Heat spreads immediately and plate dimension remains unchanged.
- ▶ Stronger than conventional shellac plates.
- ▶ Easily fused to each other so handle can be made from excess.
- ▶ Excess can be cut easily with scissors when hot and when cold, trim with burs, abrasive wheels, etc.
- ▶ Borders can be folded easily.
- ▶ Modify the tray anytime so best border moulding can be achieved.



PROSTHO RANGE

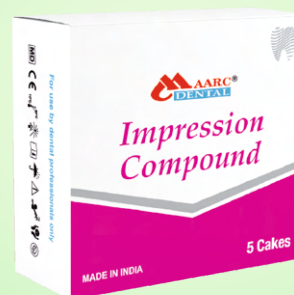


Impression Compound Sticks



Green tracing sticks

Impression Compound



Description: Impression Compound Sticks (Green tracing sticks) is a thermoplastic material supplied in the form of sticks (type-1 low fusing impression compound). It is a low fusing material primarily used for border extensions on custom impression trays as it attains uniform plasticity. Attains high viscosity at comfortable temperatures 55-65°C making it ideal for recording the full depth of the sulcus, recording of the borders during impression making for preparation of removable dental prosthesis, taking functional and relining impressions. Provides wide working area due to extra working time & quick hardening property when immersed in cold water.

Maarc Impression Compounds are thermoplastic impression materials available in both cakes and sticks form.

Thickness of Sticks: 113 x 9 mm dia weighing approx. 10g each.

| Packing | Product Code |
|-------------------------------------------------------------------------|---------------------------------|
| Impression Compound Sticks (Green Tracing Sticks) 10 N, 15 N & 100 N | 1501/010, 1501/015, 1501/100 |
| Impression Compound Pack of 5 cakes | 1503/005 |

Intended Use: Recording border extensions on custom impression trays. Making of functional and relining Impressions.

Properties & Advantages:

Impression Compound Sticks (Green Tracing Sticks):

- ▶ Suitable for muscle trimming work.
- ▶ Fast and uniform plasticity.
- ▶ Quick hardening in cold water.
- ▶ Wide working area.

Impression Compound:

- ▶ It softens at 60°C.
- ▶ It is excellent for taking primary impression of edentulous teeth and becomes stable after cooling and are shrinkage free.
- ▶ It can be used with matrix band for single tooth impressions.

Inlay Sticks



Description: Inlay/Onlay wax are type-1 waxes which soften at a temperature that is not hazardous to the dental pulp tissue, hence can be used to prepare patterns of indirect-restorations in the patient's mouth by direct-wax technique. They have uniform workability over a wide temperature range and facilitate accurate adaptation to the prepared cavity.

Thickness: L 114 x 8 mm dia of big sticks.

| Packing | Product Code |
|---------|--------------|
| 10 N | 2403/010 |

Indications: Used for the construction of wax pattern using direct wax technique, for fabrication of inlay & onlay restorations, fabrication of onlays and full coverage crowns by indirect wax technique on the die models.

Sticky Wax Sticks



Description: Wax to fix removable prosthesis. Its high adherent properties make this wax an excellent material to fix resin teeth to the anterior walls and to fix these walls to the model.

Thickness: 114 x 8 mm dia sticks weighing approx. 6 g / pc.

| Packing | Product Code |
|---------|--------------|
| 10 N | 2701/010 |
| 200 g | 2701/200 |

Indications:

- ▶ It is used to hold or weld materials or pieces together.
- ▶ The Sticky Wax can also be used to connect or repairs wax patterns.

Properties & Advantages:

- ▶ It is blending of various waxes and resins and it is yellow in color.
- ▶ It melts when heated and adheres to the surface over which it is applied.
- ▶ It holds the components prior to fixation and gives a clean burnout.

Spacer Wax



Description: Wax used to hold space for impression material, baseplate wax or tissue.

Indications: To provide space for final impression material.

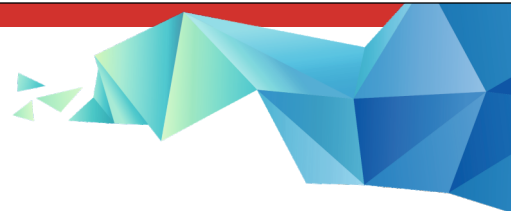
Thickness: 0.4 mm (+/-0.1 mm)

Packing: Upper and lower spacer wax are packed separately. Wrapped in non-adhesive silicone paper to facilitate easy removal.

| Packing | Product Code |
|-------------------------|--------------|
| Spacer Wax Upper - 25 N | 2601/025 |
| Spacer Wax Lower - 25 N | 2602/025 |

Properties & Advantages:

- ▶ Thin wax sheets of 0.3mm thickness – shape of upper and lower base plates.
- ▶ It increases the thickness of wax rims while making dentures using base plates.
- ▶ Provide uniform thickness of impression material.
- ▶ Use of spacer wax prevents direct contact of acrylic trays with soft tissues.
- ▶ Allows relief, stress distribution, stability & increases the accuracy of impression.



Cold Cure Acrylic Resin



Denture Base Resin

Description: Self-cure acrylic resin is a chemically setting (auto polymerizing) acrylic resin used in a variety of applications in dentistry in either dough form or brush-on technique or injection moulding technique or sprinkle on technique.

Indications:

MAARC Cold Cure / Self cure (autopolymerizing) acrylic resin to be used for:

- ▶ Repair & Relining of dentures.
- ▶ Fabrication of Custom Impression Trays.
- ▶ Removable Orthodontic appliances.
- ▶ Provisional crown and bridges.

Recommended Proportion of mixing: 13 cc Powder to 10 ml Liquid.

| Product Type | Packing | Product Code |
|-------------------------------|-------------------------------|----------------------------------------|
| Clear | 100 g, 400 g, 500 g, 3 kg | 6201/100, 6201/400, 6201/500, 6201/003 |
| Pink | 100 g, 400 g, 500 g, 3 kg | 6202/100, 6202/400, 6202/500, 6202/003 |
| Light Veined | 100 g, 400 g, 500 g, 3 kg | 6203/100, 6203/400, 6203/500, 6203/003 |
| Dark Veined | 100 g, 400 g, 500 g, 3 kg | 6204/100, 6204/400, 6204/500, 6204/003 |
| Liquid | 100 ml, 400 ml, 500 ml, 4 lit | 6301/100, 6301/400, 6301/500, 6301/004 |
| Universal Pack (Clear) | 400 g + 400 ml | 6504/001 |
| Universal Pack (Pink) | 400 g + 400 ml | 6505/001 |
| Universal Pink (Light Veined) | 400 g + 400 ml | 6506/001 |

*Refer website for complete re-order numbers

Special Tray Material



| Packing | Product Code |
|--------------------------------------------------|--------------|
| Special Tray Material Powder 500 g (Green) | 6601/500 |
| Special Tray Material Powder 500 g (Pink) | 6602/500 |
| Special Tray Material Liquid 250 ml (Clear) | 6701/250 |
| Special Tray Material Kit 500 g + 250 ml (Green) | 6901/001 |
| Special Tray Material Kit 500 g + 250 ml (Pink) | 6902/001 |

Indications:

Special Tray material for:

1. Individual impression trays.
2. Base plates & stabilized base plates.

Heat Cure Acrylic Resin



Denture Base Resin

Description: Heat-cured acrylic denture resin powder is polymerised methyl methacrylate used in conjunction with heat cure acrylic liquid (methyl methacrylate monomer) to make various removable oral & maxillofacial prosthesis and pan-facial prosthesis.

Indications:

To be used for fabrication of:

- ▶ Removable complete denture.
- ▶ Removable partial denture.
- ▶ Orthodontic appliances.
- ▶ Oral & Maxillofacial prosthesis.
- ▶ Obturators.
- ▶ Relining & Rebasing of dentures.

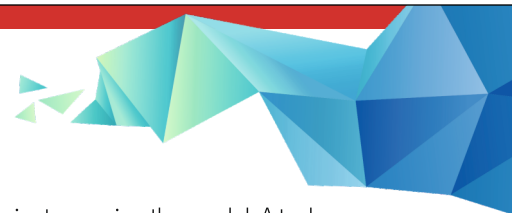
Recommended Proportion of mixing: 10 cc Powder to 5 ml Liquid.

| Product Type | Packing | Product Code |
|-------------------------------|--------------------------------|----------------------------------------|
| Clear | 100 g, 450 g, 500 g, 3 kg | 6001/100, 6001/450, 6001/500, 6001/003 |
| Pink | 100 g, 450 g, 500 g, 3 kg | 6002/100, 6002/450, 6002/500, 6002/003 |
| Light Veined | 100 g, 450 g, 500 g, 3 kg | 6003/100, 6003/450, 6003/500, 6003/003 |
| Dark Veined | 100 g, 450 g, 500 g, 3 kg | 6004/100, 6004/450, 6004/500, 6004/003 |
| Liquid | 100 ml, 225 ml, 4 lit | 6101/100, 6101/225, 6101/004 |
| Universal Pack (Clear) | 450 gms + 225 ml + 110 ml CMSL | 6501/001 |
| Universal Pack (Pink) | 450 gms + 225 ml + 110 ml CMSL | 6502/001 |
| Universal Pink (Light Veined) | 450 gms + 225 ml + 110 ml CMSL | 6503/001 |

*Refer website for complete re-order numbers

Properties & Advantages:

- ▶ The longer working time (dough like phase) enables the dental technician to mould the material as per requirement.
- ▶ High mechanical strength, minimal residual monomer and longer retention of the colour are some of the exceptional features. The surface has a high lustre and negligible porosity making it ideal for the fabrication of prosthesis.



Boxing Wax



Description: Used for boxing impressions prior to pouring the model. A tacky wax that results in perfect adhesion without the application of heat.

Thickness: 160 mm x 45 mm x 1.5 mm.

Packing: Pack of 6 sheets wrapped in silicon paper to facilitate easy removal.

| Packing | Product Code |
|--------------------|--------------|
| 6 N (6 inch) | 2203/006 |
| 450 g (6 inch) | 2203/450 |
| 450 g Red (6 inch) | 2211/450 |
| 6 N (12 inch) | 2204/006 |

Intended Use: Boxing Wax is used to build up vertical walls around the impression in order to pour the gypsum product to make a cast base.

Properties & Advantages:

- ▶ It is soft and tacky for boxing in impressions.
- ▶ Adheres easily to most of the surfaces.

Beading Wax



Periphery Wax

Description: It is a type of processing wax. Beading Wax is a soft wax ideal for dentists to use to bead round the edge of a functional impression prior to casting.

Thickness: 6 mm x 6 mm x 250 mm approx.

Packing: It comes in the pack of 12 strips wrapped in non-adhesive silicone paper to facilitate easy removal.

| Packing | Product Code |
|-------------|--------------|
| 12 N | 2309/012 |
| 450 g (Red) | 2315/450 |

Intended Use: Beading Wax is adapted around the impression borders to create the land area of the cast.

Properties & Advantages:

- ▶ It is sticky enough to easily adapt at the periphery or edge of alginate impression / final impression by hand pressure.
- ▶ It creates the base of the cast and preserves the outer portion of the cast.

Cold Mould Seal



Separating Medium

Description: Cold Mould Seal is a specially developed formulation of separating solution for universal use, suitable for both packing / pressing technique & cast moulding.

| Packing | Product Code |
|----------|--------------|
| 110 ml | 6401/110 |
| 500 ml | 6401/500 |
| 1 liters | 6401/001 |
| 5 liters | 6401/005 |

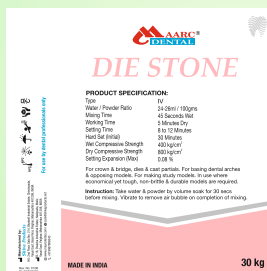
Used when great accuracy is not required eg.

- ▶ Flasking of denture.
- ▶ Articulating the model.
- ▶ Separation of model from base during repair works.

Properties & Advantages:

- ▶ Makes tough film with elasticity which is unbreakable in pressure.
- ▶ Film does not chip off from plaster at pressure. High quality of the raw material guarantees optimum separation with both techniques.

Die Stone Plaster



Type 4 (Pink / Off White)

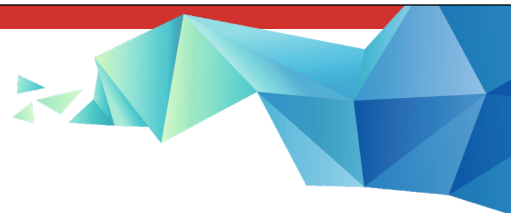
| Packing | Product Code |
|------------------------|-------------------------------------------|
| 1 kg, 3 kg, 5 kg, 20kg | 4101/001, 4101/003, 4101/005, 4101/020 |

Intended Use:

- ▶ For crown and bridge, dies and cast partials.
- ▶ For basing dental arches and opposing models.
- ▶ For making study models.
- ▶ In use where economical yet tough, non-brittle and durable models are required.

Type IV – Specification:

- ▶ Water/ Powder: 24-26ml/100gm.
- ▶ Mixing Time: 45 seconds wet.
- ▶ Working Time: 5 minutes dry.
- ▶ Setting Time: 8-12 minutes.
- ▶ Hard Set (Initial): 30 Minutes.
- ▶ Linear Expansion (Max): 0.08%
- ▶ Wet Compressive Strength: 400 kg/cm²
- ▶ Dry Compressive Strength: 800 kg/cm²



Reinforcement Mesh



Grid Strengtheners

Description: The brittle nature of acrylic denture base material makes the dentures vulnerable for breakages and midline fracture. MAARC Reinforcement Mesh golden coloured or plain stainless steel, are made using 316 L grade stainless steel. The thickness of the reinforcement mesh is less than 0.25mm, the close perforations in the mesh aid in acrylic homogeneity and easy adaptability. Making the denture virtually unbreakable when the reinforcement mesh is sandwiched between layers of acrylic, during processing the dentures.

| Packing | Product Code |
|---------------------|--------------|
| Golden Pack of 10 N | 5502 / 010 |
| Silver Pack of 10 N | 5501 / 010 |

Intended Use: Reinforce the denture and reduces the chances of midline fracture of the denture.

Properties & Advantages:

- ▶ Re-inforcement Mesh is made from 316 L grade stainless steel.
- ▶ These mesh are very much flexible and can easily adapt any shape.
- ▶ It is 0.25 mm thin so can be easily layered between acrylic.
- ▶ It gives denture desirable strength.

Palate Wax



Description: Pre-formed wax plates specially designed for use in dental prostheses fabrication. Helps achieve proper thickness and accurate anatomical details for precise finishing.

| Packing | Product Code |
|---------|--------------|
| 10 N | 2209/010 |

Indications: Used to improve denture quality by attaining a natural living tissue finish.

Properties & Advantages:

- ▶ For gold, chrome, acrylic, partial, or full palates.
- ▶ Beautiful aesthetics.
- ▶ Greater comfort.
- ▶ Less waxing and finishing.
- ▶ Convenient to use.

Casting Wax Sheets



Cast Partial Waxes

Description: Dental casting waxes are primarily used in the wax-up technique; this can include sculpturing, build up and inlay work.

Thickness: 0.3 to 0.6 mm.

Size: 160 mm x 90 mm.

Colour: 'Maarc' Casting Wax sheets are thin wax sheets. Available in Green color for cobalt chrome cast partial dentures.

| Packing | Product Code |
|---------|--------------|
| 200 g | 2206/200 |

Intended Use: Casting wax is used to form the pattern for a partial denture framework in a dental casting alloy such as Cobalt-Chromium.

Properties & Advantages:

- ▶ The Sheets are sufficiently thin to have thinner casting as possible without defects to reduce machining.
- ▶ They easily burn out during castings.

Eazy Tray



Description: Thermoplastic non toxic plastic beads for bite block, deprogrammer, special tray. The Easy Tray system is fast, clean and order-free and saves you from the mixing, mess and smell of fabricating acrylic trays. Just soften the thermoplastic material in hot water for less than a minute, then mould it directly in the mouth of the patient or on a model.

| Packing | Product Code |
|---------|--------------|
| 100 gms | 9701/100 |

Indications:

- ▶ For bite registration.
- ▶ For Lucia Jig.
- ▶ Bite Stoppers.
- ▶ Special Tray.

Properties & Advantages:

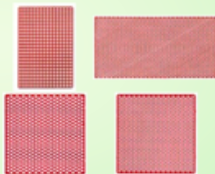
- ▶ Time Saving.
- ▶ Cost Effective.
- ▶ Accurate bite registration.
- ▶ Easy to use.



PROSTHO RANGE



Retention Mesh



Description: Slender shape with high stability is one of the requirements met superbly by these retentions.

Important Aspects: the complexity of wax-up is reduced, thus saving time, and the partial denture prosthesis acquires optimal stability and wearing comfort. The grid retentions with holes can also be integrated very well as reinforcing grids in total maxillary dentures made of plastic.

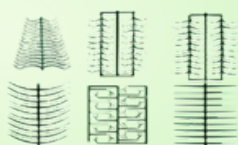
| Packing | Product Code |
|---------|--------------|
| 10 N | 2952/010 |

Indications: Reinforce the denture and reduces the chances of midline fracture of the denture.

Properties & Advantages:

- ▶ They have an optimal anatomical shape and are made of easily adapted wax. Adhesion to the investment material model is optimal.

Clasp Profiles



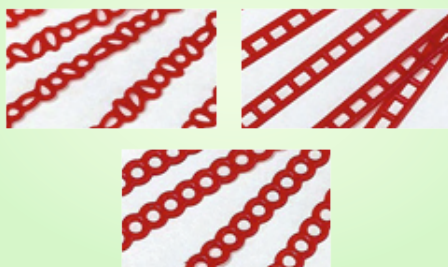
Description: Clasp Profile waxes are primarily used in the wax-up technique; this can include sculpturing, build up and inlay work.

| Packing | Product Code |
|---------|-------------------------------------------------------------------------------------------------------------|
| 10 N | 2901/010, 2902/010, 2903/010, 2904/010, 2905/010, 2906/010, 2907/010, 2908/010, 2909/010, 2910/010 |

Indications: Wax clasp profiles for molars and premolars are designed to ensure good hold and stability for dentures. Half-teardrop shaped cross-sections are effective at preventing food residues from getting stuck. All clasp profiles have an optimal anatomical shape and are made of easily adapted wax. Adhesion to the investment material model is optimal.

Cast Partial Waxes

Perforated Wax Retainers/ Grids Wax

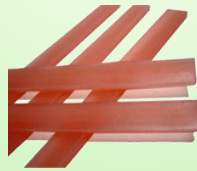
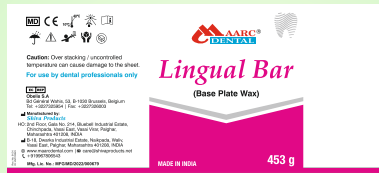


Description: While retention profile shape of the various MAARC wax retention is determined by the specific indication and clinical requirement. Excellent restoration result can be achieved in both mandibular and maxillary modelling. Both partial and total dental prosthesis can be modelled easily and efficiently.

MAARC wax retentions are available in packs of 10 pieces.

| Packing | Product Code |
|----------------------------|--------------------|
| 25 N (Stagge Red, Red) | 2312/025, 2313/025 |
| 25 N Ladder Retainer (Red) | 2314/025 |

Lingual Bar



Description: Pre-formed lingual connector bars. Ideal for clasps, flange, and lingual connector areas. Used by dental labs while waxing a denture.

Thickness: These are wax strips – 160 mm long x 15 mm high, with taper across 15 mm – one edge – 2.25 mm and another 1.1 mm.

| Packing | Product Code |
|-------------|--------------|
| 453 g (1lb) | 2205 / 453 |

Utility Wax



Description: Utility Waxes are in the form of ropes / wires, easily shaped waxes that are especially suited for fill-ins and wax pattern repair. It can also be used to easily correct mistakes by “blending-in” with your original wax part.

Thickness: 5.0 diameter round x 30 cm long.

| Packing | Product Code |
|-------------------------------------------------------------|---------------------------------------------------------------|
| Utility Wax White 5 N, 12 N, 48 N, 96 N, 250 g, 500 g | 2308/005, 2308/012, 2308/048, 2308/096, 2308/250, 2308/500 |
| Utility Wax Red 12 N, 250 g | 2316/012, 2316/250 |

Intended Use: Utility wax is used for protecting and preserving the periphery edge in removable prosthetics. The application of utility wax on the impression tray allows a perfect transfer of the periphery edge from the impression onto the model.

Properties & Advantages:

- ▶ Extremely pliable at room temperature.
- ▶ It can also be used to fill sprue bases.
- ▶ The wax can be adapted at room temperature and can be used without pre-heating.



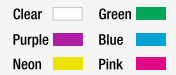
ORTHODONTIC RANGE



Images used are for representation only.



Orthodontic Self-Curing Monomer



For Orthodontic Appliances

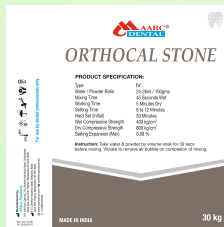
Description: Orthodontic self-curing monomer formulated with the most vibrant and attractive colours.

| Packing | Product Code |
|------------------------------------------------|------------------------------------------------------------------|
| 100 ml (Green/Neon/Purple/Blue/Pink/Orange) | 6302/100, 6303/100, 6304/100, 6305/100, 6306/100, 6307/100 |

Indications:

- For development of orthodontic retainers.
- Fine polymer for a better finish.
- Cold cured acrylic resin permits the simple & economical fabrication of orthodontic appliances.

Orthocal Stone



Type IV

Description: For crown and bridge, dies and cast partials. For basing dental arches and opposing models. For making study models.

| Packing | Product Code |
|--------------------------------------|------------------------------------------------------|
| 1 kg, 3 kg, 5 kg pails, 25 kg, 30 kg | 4102/001, 4102/003, 4102/005P, 4102/025, 4102/030 |

Intended Use: In use where economical yet tough, non brittle and durable models are required.

Type IV – Specification:

- Water/ Powder: 24-26ml/100gm.
- Working Time: 5 minutes dry.
- Hard Set (Initial): 30 Minutes.
- Wet Compressive Strength: 400 kg/cm²
- Dry Compressive Strength: 800 kg/cm²
- Mixing Time: 45 seconds wet.
- Setting Time: 8-12 minutes.
- Linear Expansion (Max): 0.08%

Relief Wax



Orthodontic Appliance Relief Material

Description: Translucent in color and does not appear as an opaque wax coating on the surface of brackets.

Intended Use: Ortho relief wax- to relieve the sharper edges of orthodontic brackets from pricking.

| Packing | Product Code |
|----------------------------------------------------|--------------------------------|
| Silicone Base: 5 N, 5 N x 20 packs, 5 N x 50 packs | 2310/005, 2310/20x5, 2310/50x5 |
| Wax Base: 5 N, 5 N x 20 packs, 5 N x 50 packs | 2317/005, 2317/20x5, 2317/50x5 |

Properties & Advantages:

- Soft and easy to manipulate, for easy application on the surface of orthodontic brackets.
- The unique properties of Ortho wax make it perfect for protecting your gums from the metal edges of braces.
- The wax is solid at room temperature but can be softened and shaped by the warmth of your hands.



PREVENTIVE RANGE





PREVENTIVE RANGE



Zirprophy



Zircon Prophylaxis Paste

Pro-Paste



Prophylaxis Paste

Pumice Powder



Description:

Zirprophy is a Zirconium Silicate based polishing paste used for professional tooth cleaning and polishing during prophylactic treatment. It does not break down as pumice from coarse to fine but rather removes stain smoothly due to fine particles.

Pro-Paste is a pumice based polishing paste used for professional tooth cleaning and polishing during prophylactic treatment. Pro-Paste is suitable for use in patients without any age or gender restrictions.

Pumice Powder: Micronised pumice powder to provide a smooth finish to the dentures.

| Packing | Product Code |
|------------------------------------------------------|-------------------------------|
| 45 g, 340 g (Zirprophy) | 9001/045, 9001/340 |
| 90 g, 340 g (Pro-Paste) | 9002/090, 9002/340 |
| 90g, 340g (Pro-Paste) (Strawberry Flavor) | 9002/S/090, 9002/S/340 |
| 500 g, 5 kg pail, 20 kg bag (Pumice Powder - Fine) | 5003/500, 5003/005P, 5003/020 |
| 500 g, 5 kg pail, 20 kg bag (Pumice Powder - Medium) | 5004/500, 5004/005P, 5004/020 |
| 500 g, 5 kg pail, 20 kg bag (Pumice Powder - Coarse) | 5005/500, 5005/005P, 5005/020 |

Intended Use:

Zirprophy & Pro-Paste:

- Removal of surface, soft and hard plaque.
- Removal of extrinsic discolouration (e.g., staining from coffee, tea or tobacco).
- Cleaning and polishing restorations during professional tooth cleaning.
- Removal of residues of temporary luting material prior to definitive bonding (cementation).
- Polishing tooth surfaces during prophylactic treatment, prior to bleaching and following the removal of orthodontic devices.

Pumice Powder:

- Polishing of dentures.

Indication:

- Zirprophy & Pro-Paste are indicated for use to effectively clean and polish teeth.

Properties & Advantages:

- Better polish.
- Splatter free.
- Zirconium silicate abrasive media in Zirprophy.
- Controlled particle size (minimum post scaling sensitivity).
- Thixotropic oil free.
- Fluoride free.
- Easy removal of smoking & tartar stains.

Find Fast



Caries Indicator

Description: Find Fast is an important tool for the detection of decay /caries through the method of pigmentation of dental caries. Find Fast clearly differentiates the two layers of carious & normal dentin by staining the outer carious dentin scarlet red yet not staining the inner normal dentin. The distinct staining of only the outer, infected carious layer provides a visible, precise guide for caries removal.

| Packing | Product Code |
|-------------|--------------|
| 15ml (Pink) | 3005/015 |

Intended Use: Detecting carious dentine during cavity preparation in restorative dentistry. Detection of dental caries in places difficult to identify and prevent excessive removal of normal dentin.

Properties & Advantages:

- Identifies carious dentin ensures the maximum amount of inner dentin is preserved and infected dentin is removed.
- Easily locate root canal orifices and calcified canals.

Plaque - D



Plaque Disclosing Gel

Description: Plaque-D is a water based gel that contains staining agent. It helps in differentiating plaque by colour and aids in patient oral hygiene education. The gel is easy to apply and provides good control over the flow.

| Packing | Product Code |
|---------------------------------|--------------|
| 2gm x 4 syr + 4 applicator tips | 9301/2x4 |
| 50 ml Liquid | 3017/050 |

Intended Use: Dental plaque disclosing gel.

Indications: To identify plaque before oral prophylaxis. Patient education and motivation about oral hygiene.



WAXES



Inlay/Onlay Pattern Wax



Description: Inlay/Onlay wax are type-1 waxes which soften at a temperature that is not hazardous to the dental pulp tissue, hence can be used to prepare patterns of indirect-restorations in the patient's mouth by direct-wax technique. They have uniform workability over a wide temperature range and facilitate accurate adaptation to the prepared cavity.

Intended Use: Used for the construction of wax patterns using direct wax technique, for fabrication of inlay & onlay restorations, fabrication of onlays and full coverage crowns by indirect wax technique on the die models.

Properties & Advantages:

► Softer waxes with high flow are more flexible and are often used.

| Packing | Color | Type | Product Code | Description |
|-------------------------------------------------------|---------------------|------------------|----------------------------------|-------------------------------------------------------------------------------------------------------------------------------------------------------------------------------------------|
| Hardness No. 1 for Dipping (200 g) | Orange | Cervical Wax | 2401/200 | Soft type with degree of fluidity that will allow it to flow and fit perfectly in cervical areas, high adaptation and stability to surfaces. It will wet model surface without shrinkage. |
| Hardness No. 2 for Built-Up (200g) | Red/Blue/Light Blue | Cervical Wax | 2402/200 2409/200 2410/200 | Harder than orange wax. |
| Hardness No. 3 for medium Built-Up (200g) | Blue/Red/Ivory | Cervical Wax | 2403/200 2412/200 2413/200 | Standard inlay wax wherein the pattern comes out easily from the plaster surface. |
| Hardness No. 4 Hard Pattern Wax (200g) | Green | Undercut Wax | 2404/200 | Harder than red wax used where hard pattern waxes are preferred. |
| Hardness No. 5 for hard Built-Up (200g) | Violet/Ivory | Undercut Wax | 2405/200 2411/200 | Harder than green wax – used for copying of patterns to add mechanical strength and as undercut wax. |
| Hardness No. 6 Copying Wax (200g) | Coffee | Sculpturing Wax | 2406/200 | Used for undercuts and adding mechanical stability to wax patterns of jacket crowns. |
| Hardness No. 7 for Margin (200g) | Magenta | Carving Wax | 2407/200 | Hard inlay wax. With medium flow for built up. |
| Hardness No. 8 Inlay free flowing Hard Wax (200 g) | Orange | Presentation Wax | 2408/200 | A white, enamel-like wax used to make a more aesthetic case presentation (wax-up). Easy carving properties. Also aids in the fabrication of temporaries. |



Cad-Cam Wax Blanks



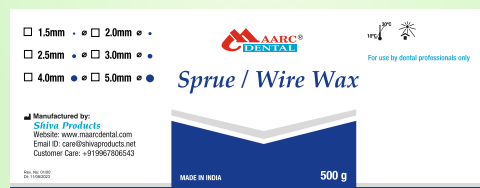
Description: The basic wax comes in cakes/blanks forms. They are of standard dimensions, so will fit in respective machine holders accurately. Wax has enough hardness and toughness to serve its purpose. Wax blanks / cakes have a high melting point, hence can be manipulated easily in the lab. During use in milling machine the wax will not stick to milling tool making it easy for cleaning the milling unit.

CAD/CAM Attributes:

| | |
|--------------------------------|----------------------------------------------|
| Colour: | White, Ivory, Grey, Blue, Tooth Colour. |
| Appearance: | Smooth even finish disc. |
| Disc Thickness: | 10,12,14,16,18,20,22,25 (in mm) (+/-0.2 mm). |
| Thickness of Outer Rim: | 10 mm (+0.3 mm). |
| Inner Diameter: | 94 mm (+/-0.2 mm). |
| Outer Diameter: | 98.5 mm (+/-0.2 mm). |
| Packing: | 1 pcs / box. |
| Type: | Open system. |

Intended Use: Used for the construction of dental crown and bridgework through lost wax casting method. It can also be used for calibration of CAD / CAM machine before milling of ceramic block in CAD / CAM machine.

Sprue/Wire Wax



Description: Wax specially designed for creating sprues used in the casting of dental prostheses.

Thickness: It is in the wire form available in diameter of 1.5 mm, 2 mm, 2.5 mm, 3 mm, 4 mm, 5 mm and 6 mm.

| Packing | Product Code |
|-----------------------|--------------------|
| 250 g, 500 g (1.5 mm) | 2301/250, 2301/500 |
| 250 g, 500 g (2.0 mm) | 2302/250, 2302/500 |
| 250 g, 500 g (2.5 mm) | 2303/250, 2303/500 |
| 250 g, 500 g (3.0 mm) | 2304/250, 2304/500 |
| 250 g, 500 g (4.0 mm) | 2305/250, 2305/500 |
| 250 g, 500 g (5.0 mm) | 2306/250, 2306/500 |
| 250 g, 500 g (6.0 mm) | 2307/250, 2307/500 |

Intended Use: Sprue wax is used for spruing and mounting process of patterns.

Properties & Advantages:

- ▶ Stiff enough to hold the wax patterns and does not deform in shape.
- ▶ Easy burn out without residue.

Carving Wax/Wax Block



Description: Carving Waxes are made from high-quality ingredients and widely used in dentistry or dental lab. 'MAARC' Carving Wax comes in small blocks slugs and in various colors.

Thickness: 38 x 13 x 13 mm.

| Packing | Product Code |
|--------------------|--------------|
| 40 Blocks – White | 2501/040 |
| 40 Blocks – Red | 2502/040 |
| 40 Blocks – Blue | 2503/040 |
| 40 Blocks – Yellow | 2504/040 |
| 40 Blocks – Ivory | 2506/040 |
| 40 Blocks – Green | 2507/040 |

Indications: Suitable for carving tooth anatomy specifically designed and developed for dental students.

Properties & Advantages:

- ▶ The Wax Blocks are easy to carve.
- ▶ The special feature being the wax is sufficiently hard that it does not chip off at edges on applying pressure.
- ▶ Free from air bubbles.
- ▶ Does not chip or flake.

Carding Wax/Teeth Wax



Description: We manufacture two types of carding wax-

- ▶ For Pouring method.
- ▶ For Extrusion method.

| Packing | Product Code |
|--------------|------------------------|
| Customizable | 2801, 2802, 2803, 2804 |

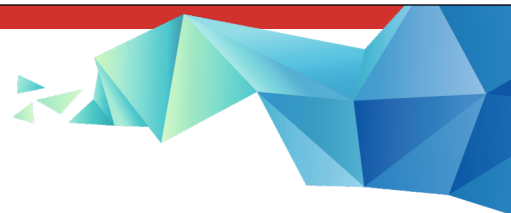
Properties & Advantages:

- ▶ Both the waxes are very stable at temperature from 12°C to 40°C.
- ▶ Pouring waxes are suitable for automatic machines for tray filling.
- ▶ Wax firmly holds the teeth and while teeth is pulled negligible amount of wax comes along with it.
- ▶ Teeth can be re-adhered gaining similar strength.



ALLOYS





Ni – Cr Alloy

(White Metal)



| Packing | Product Code |
|---------|--------------|
| 500 gms | 7001/500 |

Composition: Ni – 68%, Cr – 15%, Cu – 15% and Rest – 2%

Technical Data: Coefficient of expansion (0-500°C): range from 13.9-14.1 μ m/m°C

Properties & Advantages:

- ▶ It is beryllium free alloy with excellent castability.
- ▶ It is reusable with addition of appx 50% fresh metal during recasting.
- ▶ It can be cast in open flame.
- ▶ It has got good burnish ability and is easy to finish.
- ▶ It can be used for making cast crown bridge and pontics and frames for hard resin crowns.

R2 Alloy

(Ceramic Alloy for PFM Bonding)



| Packing | Product Code |
|---------|--------------|
| 500 gms | 7002/500 |

Composition: Ni : 62%, Cr : 25%, Mo: 11%, Si 1%, Rest 1%.(Beryllium free).

Technical Data: Coefficient of expansion (0-500°C): range from 13.9-14.1 μ m/m°C

Properties & Advantages:

- ▶ Optimum castability and bonding strength in PFM restorations.
- ▶ It produces a uniform oxide film at porcelain metal interface ensuring strong chemical bonding.
- ▶ High mechanical strength & stability on account of refined grain structure.
- ▶ Good burnish abilities.
- ▶ Brighter shine and finish.
- ▶ Suitable for open flame casting.



STONES



Dental Stone



Type III (Green, Yellow & Off White)

Description: Dental stone or type III gypsum for fabrication of dental models / base.

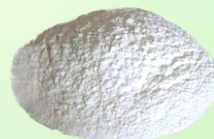
High density, low expansion Type III dental stone designed for fabrication of Dental model / base of dental model.

| Packing | Product Code |
|-----------------------------------------------------------|-------------------------------------------|
| Dental Stone Plaster Yellow 1 kg, 3 kg, 5 kg, 20 kg | 4001/001, 4001/003, 4001/005, 4001/020 |
| Dental Stone Plaster Green 1 kg, 3 kg, 5 kg, 20 kg | 4002/001, 4002/003, 4002/005, 4002/020 |
| Dental Stone Plaster Off White 1 kg, 3 kg, 5 kg, 20 kg | 4005/001, 4005/003, 4005/005, 4005/020 |

Type III - Specification:

- ▶ Water/Powder: 30ml/100gm.
- ▶ Working Time: 6 minutes dry.
- ▶ Hard Set (Initial): 30 minutes.
- ▶ Wet Compressive Strength: 250 kg/cm²
- ▶ Dry Compressive Strength: 500 kg/cm²
- ▶ Mixing Time: 60 seconds.
- ▶ Setting Time: 8 to 12 minutes.
- ▶ Setting Expansion (Max): 0.08%

Plaster of Paris



Type II (Dental Grade)

Description: Dental plaster or type II gypsum, provides the optimal strength for diagnostic dental models.

| Packing | Product Code |
|--------------------------------|------------------------------------------------------|
| 1 kg, 3 kg, 5 kg, 15 kg, 20 kg | 4201/001, 4201/003, 4201/005, 4201/015, 4201/020. |
| 15 kg bag (Slow Set) | 4202/015 |

Fabrication of diagnostic dental models, mounting of articulators, flasking of trial dentures.

Type II - Specification:

- ▶ Water/Powder: 58-60ml / 100gm.
- ▶ Mixing Time: 15 seconds wet.
- ▶ Working Time: 3 minutes dry.
- ▶ Setting Time: 5 to 6 minutes.
- ▶ Hard Set (Initial): 30 minutes.
- ▶ Setting Expansion (Max): 0.10%
- ▶ Wet Compressive Strength: 150 kg/cm²
- ▶ Dry Compressive Strength: 300 kg/cm²
- ▶ Pre Mix Temperature: Pop and Water 25°C.



MISCELLANEOUS PRODUCTS





MISCELLANEOUS PRODUCTS



Angular Alcohol Lamp



Description: Angular Alcohol Lamp, also known as a spirit lamp, is a useful apparatus which is used to produce an open flame. These lamps feature high temperature flames with no odors.

| Packing | Product Code |
|-------------------|--------------|
| 1 N (Spirit Lamp) | 5505/G/001 |

They are very useful in a dental lab/clinic where sterilizing instruments is essential. They are commonly used in denture fabrication to melt wax or compound material. Lamp can be used upright or tilted position to various angles for applying heat in right spots.

Properties & Advantages:

- ▶ Unique hexagonal shape.
- ▶ With flame control and gas exit points.
- ▶ Lamp can be used upright or tilted position to various angles for applying heat in right spots.

Glass Beads



Description: A method used for sterilizing the working ends of endodontic files and reamers or small dental instrument tips by placing them in a container containing glass beads heated to approximately 225°C (437°F) for a defined period of time.

| Packing | Product Code |
|---------------------|--------------|
| Glass Beads (200 g) | 5503/200 |

Arch Bar



Description: It is made of 316 grade SS suitable for rigid fixation. Techniques in the dentate patient begin with fixation of the occlusion. This ensures that the patients maintain their preoperative occlusal status. There are several techniques to providing mandibulomaxillary fixation (MMF). Many surgeons agree that the gold standards in MMF is the use of arch bars.

| Packing | Product Code |
|-----------------------|--------------|
| Arch bar 12 inch long | 5508/012 |

Intended Use/ Indications:

- ▶ For temporary fragment stabilization in emergency cases before definitive treatment.
- ▶ As a tension band in combination with rigid internal fixation.
- ▶ For long-term fixation in conservative treatment.
- ▶ For fixation of avulsed teeth and alveolar crest fractures.

Lubri Spray



Air Rotor Lubricant Oil

Description: Dental oil spray used for cleaning and lubricating all handpieces, contra angles and turbines.

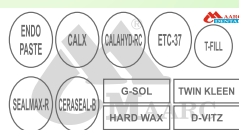
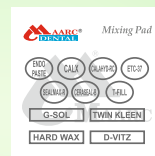
| Packing | Product Code |
|---------------------|--------------|
| 600 ml Can + Nozzle | 5506/600 |
| 150 ml Can + Nozzle | 5506/150 |

Intended Use: Lubrication and cleaning of dental handpieces to protect the precision of the Instrument. Lubri Spray is intended for internal cleaning, cleansing of old lubricant and maintenance of rotating dental and surgical instruments.

Properties & Advantages:

- Provides effective lubrication and reduces debris formation.
- Anti-Rust Agent.
- High Penetrative Ability.
- The spray is specifically designed to withstand sterilization.
- Lubri Spray lubricates and cleans the areas difficult to reach with the help of a propellant, and thereby helps in maintaining the precession of the instrument for longer duration.

Mixing Pad



Description: Maarc Mixing Pads are made of coated paper.

Dimensions: W 60mm x L 60mm & W 75mm x L 146mm.

| Packing | Product Code |
|-----------------------------------|--------------|
| Mixing Pad Small (1N x 50 Sheets) | 8004/001/S |
| Mixing Pad Big (1N x 50 Sheets) | 8004/001/B |

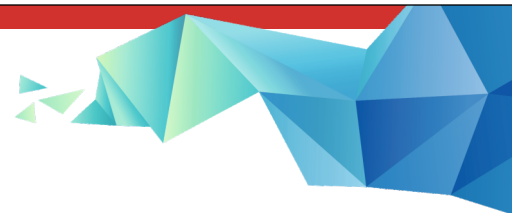
Intended Use: To be used for kneading or mixing of dental materials.

Properties & Advantages:

- High quality mixing pad.
- Easy tear-off disposable coated sheets.
- Liquid impermeable surface.
- Smooth finished surface.
- These mixing pads does not let the dental materials adhere on to their surface.



MISCELLANEOUS PRODUCTS



Die Hardener



| Packing | Product Code |
|---------|--------------|
| 100 ml | 8103/100 |
| 500 ml | 8103/500 |
| 1 ltr | 8103/001 |

- Cure, seal and smooth the gypsum surface.
- Protects the plaster.
- Best results for the production of wax-copings.
- Stain and water repellent.

Properties & Advantages:

- ▶ It produces a homogenous coating on the die stone and plaster attributed to its viscosity.
- ▶ It seals, hardens and water proofs stone and plaster.
- ▶ It protects models against abrasion specifically at marginal area which is most prone to breakage.
- ▶ The film does not disassociate from the die while building wax pattern due to heating.
- ▶ It is rapid setting and thereby reduces working time.

Die Separator / Die Lubricant



| Packing | Product Code |
|---------|--------------|
| 100 ml | 3003/100 |
| 500 ml | 3003/500 |

- It is the final product that would be applied to a die prior to the formation of the wax pattern.
- It is an ideal release agent for wax, porcelain, and composite materials.

Die Spacer



Description: Die Spacer is used to provide sufficient space between the die and crown to accommodate cements used during seating.

| Packing | Type | Product Code |
|-------------------------------------------------------------|--------|--------------|
| 100ml glass bottle with 10ml applicator bottle+50ml Thinner | Golden | 8101/100 |
| 100ml glass bottle with 10ml applicator bottle+50ml Thinner | Silver | 8102/100 |

Colour: Silver/Golden.

Die Spacer is a coloured, paint-on material applied to dies that adds a desired dimension to the surface of the die to function as a “spacer.”

Properties & Advantages:

- ▶ It produces a homogenous coating of 5 ml in single application on the die for crown and bridge restoration thereby assuring accurate seating of restorations.
- ▶ The film does not disassociate from the die while building wax pattern due to heating.
- ▶ It is rapid setting and thereby reduces working time.

Die Thinner



Description: Thinner to control thickness and restores Die Spacer to original consistency.

| Packing | Product Code |
|---------|--------------|
| 50ml | 8104/050 |

Intended Use: To be used as a thinning agent along with Die Spacer.

Properties & Advantages:

- ▶ Special thinner for setting preferred consistency.
- ▶ Universal thinner for all Die Spacers.



Shiva Products
ISO 13485: 2016 (TUV SUD Certified)

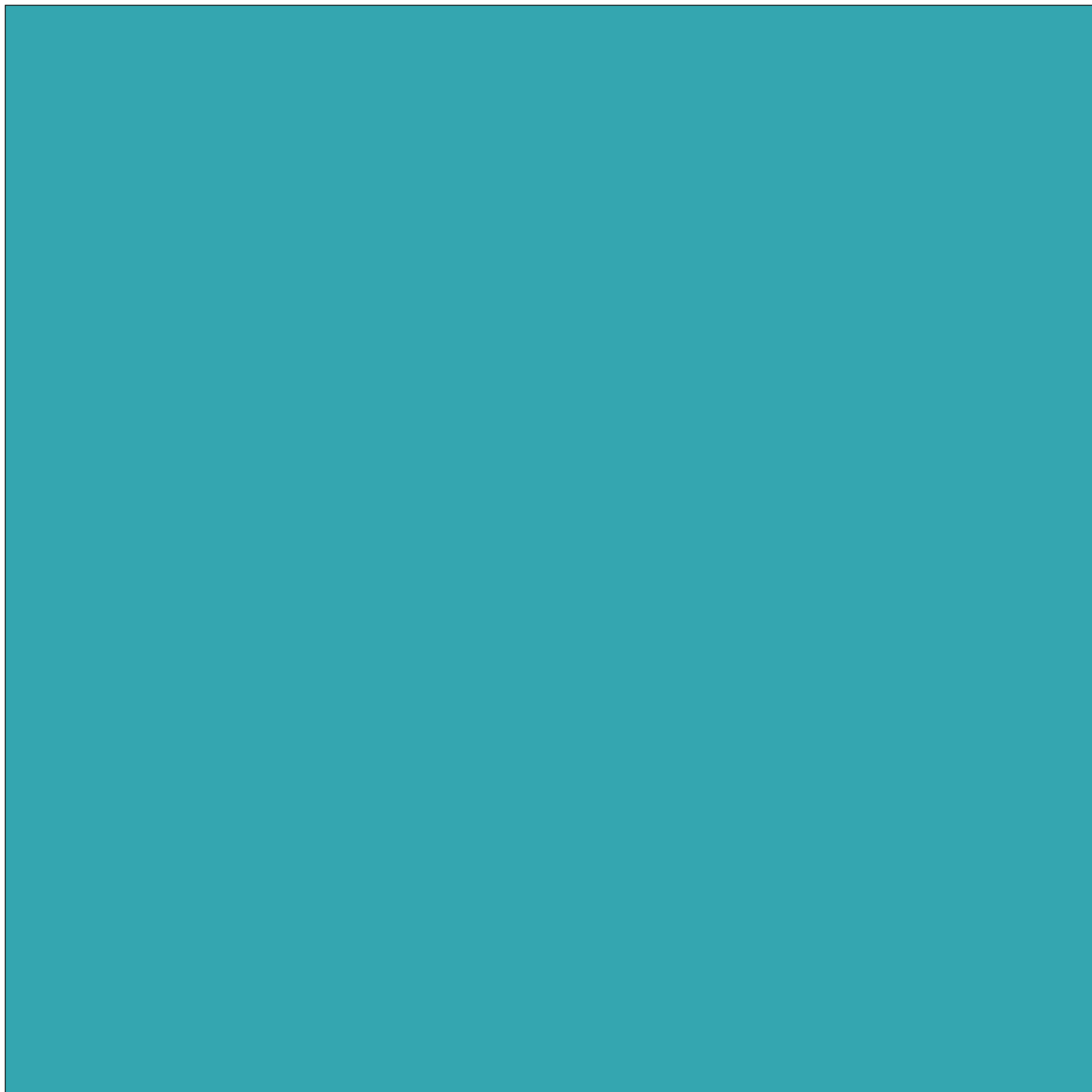
PROUDLY
EXPORTING TO

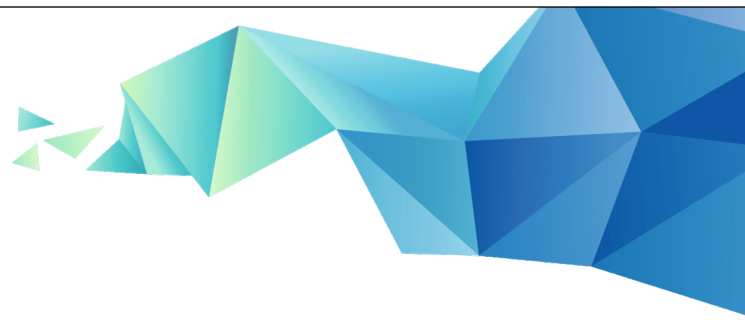
70⁺

COUNTRIES
WORLDWIDE



Images used are for representation only.






Shiva Products

ISO 13485: 2016 (TUV SUD Certified)

 **Manufactured by:**
Shiva Products

HO: 2nd Floor, Gala No. 214, Bluebell Industrial Estate, Chinchpada,
Vasai East, Vasai Virar, Palghar, Maharashtra 401208, INDIA.

 B-18, Dwarka Industrial Estate, Naikpada, Waliv, Vasai East,
Palghar, Maharashtra 401208, INDIA

 : www.maarcidental.com |  : info@shivaproducts.net |  : +91-9987637290



Doc No: SP/BR/05 - Rev No: 10/ Rev Date: 03.06.2024